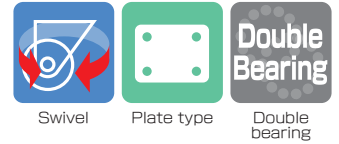
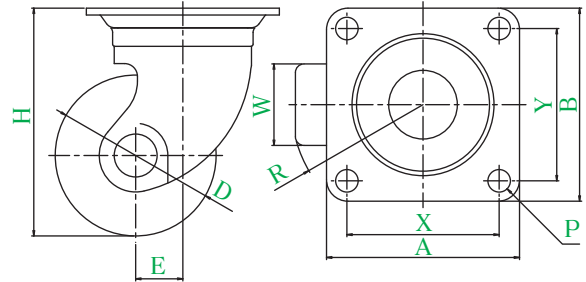


# HGTYPE



HG-65PB


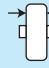










● Description of product number

**HG - 65 PB**

Bracket type  
Wheel diameter  
Wheel type

Bracket = Trivalent unichrome coating

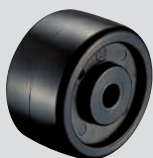
Product number	Wheels												
		D(mm)	W(mm)	H(mm)	A × B(mm)	X × Y(mm)	P(mm)	E(mm)	R(mm)	daN(kgf)	(g)		
HG-50	<b>GNB</b> Reinforced nylon wheel	50	28	68	64 × 64	50 × 50	6.5	25	51	160(163.2)	320		
HG-50GNB (P54 × 36)					70 × 54	54 × 36				160(163.2)	310		
HG-50	<b>MC</b> MC nylon wheel	50	25	68	64 × 64	50 × 50	6.5	25	51	160(163.2)	325		
	<b>MCE</b> MC nylon wheel (conductive)											160(163.2)	325
HG-65	<b>PB</b> Phenol wheel (including B)	65	38	92	90 × 90	71 × 71	10.5	22	57	300(306.0)	915		
	<b>GNB</b> Reinforced nylon wheel (including B)											300(306.0)	865
	<b>MC</b> MC nylon wheel (including B)											300(306.0)	880
	<b>MCE</b> MC nylon wheel (including B) (conductive)											300(306.0)	880
HG-75	<b>PB</b> Phenol wheel (including B)	75	38	106	90 × 90	71 × 71	10.5	22	61	320(326.4)	1005		
	<b>GNB</b> Reinforced nylon wheel (including B)											320(326.4)	930
	<b>MC</b> MC nylon wheel (including B)											320(326.4)	925
	<b>MCE</b> MC nylon wheel (including B) (conductive)											320(326.4)	965

## Wheel in use

Refer to P159 for detailed specifications.



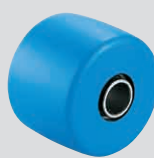
**PB**  
Phenol wheel (including B)



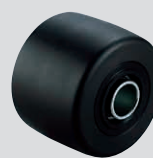
**GNB**  
Reinforced nylon wheel



**GNB**  
Reinforced nylon wheel (including B)



**MC**  
MC nylon wheel (including B)



**MCE**  
MC nylon wheel (including B) (conductive)

J

PM

J2

RJ2

SJ

S

E

G

L

SA

**H**

CAL -H

M

PL

Silence

SUS -J2

SUS -SJ

SUS -S

SUS -E

SUS -H

P

SKY

Equipped with adjuster foot

Special

Easy lock

Wheels

Wheels

Wheels

90