

- J
- PM
- J2
- RJ2
- SJ
- S
- E
- G
- L
- SA**
- H
- CAL-H
- M
- PL
- Silence
- SUS-J2
- SUS-SJ
- SUS-S
- SUS-E
- SUS-H
- P
- SKY
- Equipped with adjuster foot
- Special
- Easy lock
- Wheels

SATYPE



There are some non-conforming products.



Swivel



Angle type



Double Bearing

Double bearing

● Description of product number

SA - 75 RH

Bracket type

Wheel diameter

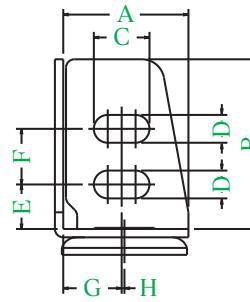
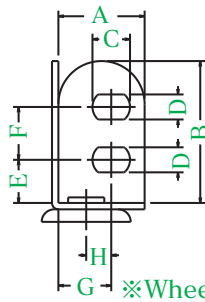
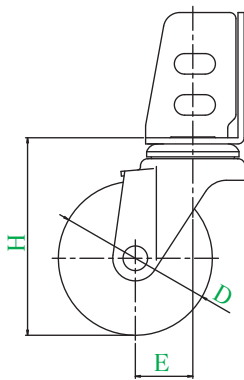
Wheel type



SA-75RH



SA-100W



※Wheel diameter: 50

※Wheel diameter: 65 to 100

Wheel in use

Wheel diameter: $\phi 50$ to $\phi 75$

Refer to P157 for detailed specifications.



R RH
Rubber wheel



NR
Rubber wheel with nylon wheel assembly



NRB
Rubber wheel with nylon wheel assembly (including B)



N
Nylon wheel



UR
Urethane wheel with nylon wheel assembly



UHF
Urethane wheel with nylon wheel assembly (including B)



EL
Elastomer wheel