

# SJ TYPE



There are some non-conforming products.



Swivel



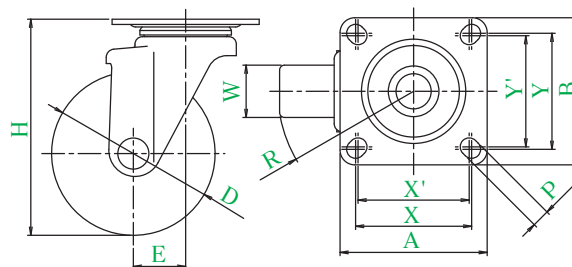
Plate type



Double bearing



SJ-100W



● Description of product number

**SJ - 100 W**

Bracket type	Wheel diameter	Wheel type
--------------	----------------	------------

Bracket = Trivalent unichrome coating

Product number		Wheels										
			Wheel diameter D(mm)	Wheel width W(mm)	Mounting height H(mm)	Mounting base A × B(mm)	Mounting dimensions X × Y(X' × Y') (mm)	Hole diameter P(mm)	Eccentricity E(mm)	Turning radius R(mm)	Allowance load daN(kgf)	Wheel weight (g)
SJ-100	W	Rubber wheel with steel plate wheel assembly (including B)	100	32	132	90 × 90	71 × 71 (68 × 68)	11	32	82	120(122.4)	980
	WP	Rubber wheel with steel plate wheel assembly									120(122.4)	930
	NR	Rubber wheel with nylon wheel assembly (including B)									100(102.0)	870
	N	Nylon wheel								83	120(122.4)	780
	NB	Nylon wheel (including B)									120(122.4)	870
	UW	Urethane wheel with steel plate wheel assembly (including B)									120(122.4)	1070
SJ-125	GU	Urethane wheel with nylon wheel assembly (including B)	125	32	168	102 × 102	80 × 80 (75 × 75)	11	32	95	100(102.0)	890
	W	Rubber wheel with steel plate wheel assembly (including B)									120(122.4)	1180
	WP	Rubber wheel with steel plate wheel assembly									120(122.4)	1130
											120(122.4)	1055

● The rubber wheel with conductive steel plate wheel assembly (including B) and the urethane wheel with antistatic steel plate wheel assembly (including B) having wheel diameter of  $\phi$  100 can be manufactured.

## Wheel in use

Refer to P154 for detailed specifications.



W

Rubber wheel with steel plate wheel assembly (including B)



WP

Rubber wheel with steel plate wheel assembly



NR

Rubber wheel with nylon wheel assembly (including B)



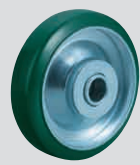
N

Nylon wheel



NB

Nylon wheel (including B)



UW

Urethane wheel with steel plate wheel assembly (including B)



GU

Urethane wheel with nylon wheel assembly (including B)

J

PM

J2

RJ2

**SJ**

S

E

G

L

SA

H

CAL  
-H

M

PL

Silence

SUS  
-J2

SUS  
-SJ

SUS  
-S

SUS  
-E

SUS  
-H

P

SKY

Equipped  
with  
adjuster  
foot

Special

Easy  
lock

Wheels