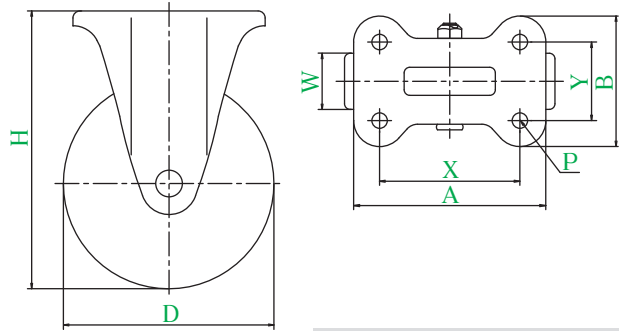


PMR TYPE



PMR-150UWB



● Description of product number

PMR - 150 UWB

Bracket type Wheel diameter Wheel type

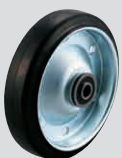
Bracket = Trivalent unichrome coating

Product number	Wheels									
		Wheel diameter D(mm)	Wheel width W(mm)	Mounting height H(mm)	Mounting base A × B(mm)	Mounting dimensions X × Y(mm)	Hole diameter P(mm)	Allowance load daN(kgf)	Wheel weight (g)	
PMR-130	WB Rubber wheel with steel plate wheel assembly (including B)	130	40	177	137 × 93	100 × 56	11	180(183.6)	1260	
	UWB Urethane wheel with steel plate wheel assembly (including B)		35					250(255.0)		1650
PMR-150	WB Rubber wheel with steel plate wheel assembly (including B)	150	40	198	137 × 93	100 × 56	11	200(204.0)	1480	
	AW Rubber wheel with aluminum wheel assembly (including B)		42					250(255.0)		1600
	UWB Urethane wheel with steel plate wheel assembly (including B)		38					300(306.0)		1950
PMR-200	WB Rubber wheel with steel plate wheel assembly (including B)	200	43	250	151 × 102	112 × 63	11.5	250(255.0)	3150	
	AW Rubber wheel with aluminum wheel assembly (including B)		45					300(306.0)		3170
	UWB Urethane wheel with steel plate wheel assembly (including B)		42					400(408.0)		3230

● For casters having wheel diameter of ϕ 150 and rubber wheel with steel plate wheel assembly (including B), wide wheel can be manufactured.
* Refer to P154 for detailed specifications.

Wheel in use

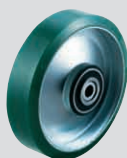
Refer to P153 for detailed specifications.



WB
Rubber wheel with steel plate wheel assembly (including B)



AW
Rubber wheel with aluminum wheel assembly (including B)



UWB
Urethane wheel with steel plate wheel assembly (including B)