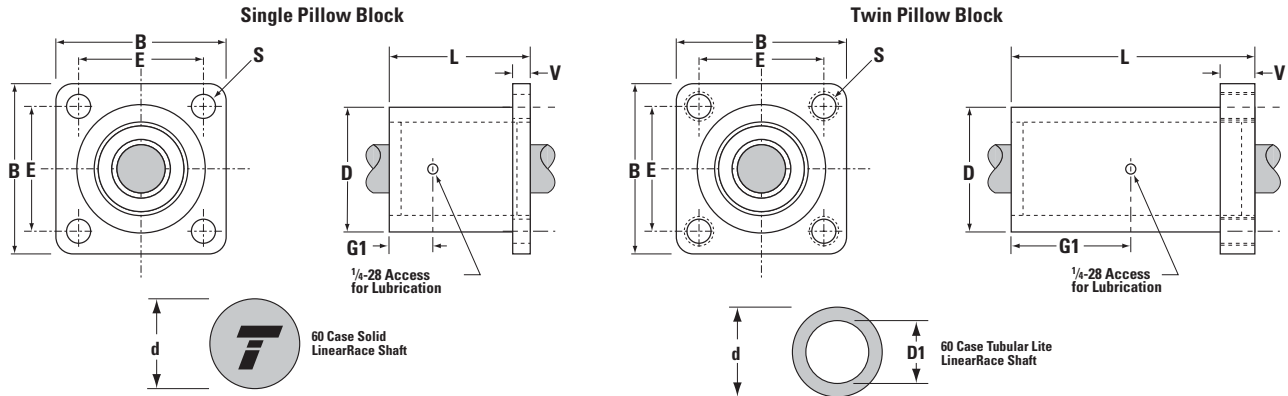
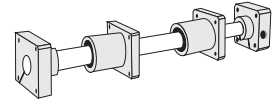


Inch – Super Smart Ball Bushing Bearings

Super Smart Ball Bushing Flanged Single and Twin Pillow Blocks for End Supported Applications



Super Smart Ball Bushing Flanged Pillow Blocks and 60 Case LinearRace Shaft (Dimensions in inches)

| Part Number ⁽²⁾ | | Nominal Diameter | B | E ±.010 | L | D | V | G1 | S Hole Dia. | 60 Case LinearRace Diameter d | 60 Case LinearRace Minimum Depth of Hardness | 60 Case Solid LinearRace Mass lb/in | 60 Case Tubular Lite LinearRace Mass lb/in | 60 Case Tubular Lite LinearRace ID D1 | Pillow Block Mass lb | Dyn. ⁽¹⁾ Load Cap. lb _f |
|---|--------------------|------------------|------|---------|------|------|-----|------|-------------|-------------------------------|--|-------------------------------------|--|---------------------------------------|----------------------|---|
| Super Smart Ball Bushing Flanged Pillow Block | 60 Case LinearRace | | | | | | | | | | | | | | | |
| SS6UFB8 | 1/2 L | .500 | 1.63 | 1.250 | 1.69 | 1.25 | .25 | .72 | .19 | .4995/.4990 | .04 | .06 | – | – | .23 | 265 |
| SSUFB12 | 3/4 L | .750 | 2.38 | 1.750 | 2.06 | 1.75 | .38 | .89 | .22 | .7495/.7490 | .06 | .13 | .08 | .460/.416 | .52 | 1130 |
| SSUFB16 | 1 L | 1.000 | 2.75 | 2.125 | 2.81 | 2.25 | .50 | 1.27 | .28 | .9995/.9990 | .08 | .22 | .16 | .629/.569 | 1.04 | 1900 |
| SSUFB20 | 1 1/4 L | 1.250 | 3.50 | 2.750 | 3.63 | 3.00 | .63 | 1.67 | .35 | 1.2495/1.2490 | .08 | .35 | – | – | 2.21 | 2350 |
| SSUFB24 | 1 1/2 L | 1.500 | 4.00 | 3.125 | 4.00 | 3.62 | .75 | 1.86 | .41 | 1.4994/1.4989 | .08 | .50 | .33 | .93/.84 | 3.68 | 3880 |

Super Smart Ball Bushing Flanged Twin Pillow Blocks and 60 Case LinearRace Shaft (Dimensions in inches)

| Part Number ⁽²⁾ | | Nominal Diameter | B | E ±.010 | L | D | V | G1 | S Thread | 60 Case LinearRace Diameter d | 60 Case LinearRace Minimum Depth of Hardness | 60 Case Solid LinearRace Mass lb/in | 60 Case Tubular Lite LinearRace Mass lb/in | 60 Case Tubular Lite LinearRace ID D1 | Pillow Block Mass lb | Dyn. ⁽¹⁾ Load Cap. lb _f |
|--|--------------------|------------------|------|---------|------|------|------|------|----------|-------------------------------|--|-------------------------------------|--|---------------------------------------|----------------------|---|
| Super Smart Ball Bushing Flanged Twin Pillow Block | 60 Case LinearRace | | | | | | | | | | | | | | | |
| SS6UTFB8 | 1/2 L | .500 | 1.63 | 1.250 | 3.20 | 1.25 | .90 | 1.48 | 1/4-20 | .4995/.4990 | .04 | .06 | – | – | .45 | 530 |
| SSUTFB12 | 3/4 L | .750 | 2.38 | 1.750 | 3.95 | 1.75 | .90 | 1.98 | 1/4-20 | .7495/.7490 | .06 | .13 | .08 | .460/.416 | 1.05 | 2260 |
| SSUTFB16 | 1 L | 1.000 | 2.75 | 2.125 | 5.33 | 2.25 | .90 | 2.67 | 5/16-18 | .9995/.9990 | .08 | .22 | .16 | .629/.569 | 1.95 | 3800 |
| SSUTFB20 | 1 1/4 L | 1.250 | 3.50 | 2.750 | 6.70 | 3.00 | .90 | 3.35 | 5/16-18 | 1.2495/1.2490 | .08 | .35 | – | – | 4.06 | 4700 |
| SSUTFB24 | 1 1/2 L | 1.500 | 4.00 | 3.125 | 7.50 | 3.62 | 1.00 | 3.75 | 3/8-16 | 1.4994/1.4989 | .08 | .50 | .33 | .93/.84 | 6.84 | 7760 |

(1) The Dynamic Load Capacity is based on a rated travel life of 2 million inches. The actual Dynamic Load Capacity can be affected by the orientation of the bearing or the direction of the applied load. For dynamic load correction factors see polar graphs below. Dynamic load capacity of Twin Super Smart Flanged Pillow blocks is based on two bearings equally loaded.

(2) For part number description and specifications see page 27.

Note: For additional technical information, see the Engineering section beginning on page 262.