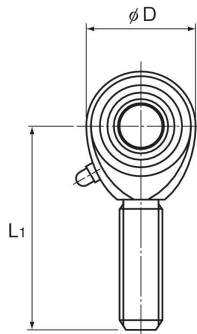


## Model POS (Male Thread Type)



Model No.	Outer dimensions			Threaded $S_1$ JIS Class 2	Holder Dimensions	
	Length L	Diameter D	Width $B_1$ 0 -0.1		B $\pm 0.1$	$L_1$
POS 5	41	16	8	M5×0.8	6	33
POS 6	45	18	9	M6×1	6.75	36
POS 8	53	22	12	M8×1.25	9	42
POS 10	61	26	14	M10×1.5	10.5	48
POS 12	69	30	16	M12×1.75	12	54
POS 14	77	34	19	M14×2	13.5	60
POS 16	85	38	21	M16×2	15	66
POS 18	93	42	23	M18×1.5	16.5	72
POS 20	101	46	25	M20×1.5	18	78
POS 22	109	50	28	M22×1.5	20	84
POS 25	124	60	31	M24×2	22	94
POS 30	145	70	37	M30×2	25	110

### [Material]

Holder : S35C (Chromate treatment)

Spherical inner ring : SUJ2, 58 HRC or higher

( Hard chrome plated except for the inner surface of the inner ring )

Bush : copper alloy

### [Fitting with the Shaft]

Condition	Dimensional tolerance of the shaft
Normal load	h7
Indeterminate load	p6

### Model number coding

**POS10 L**

Model number | Left-hand thread