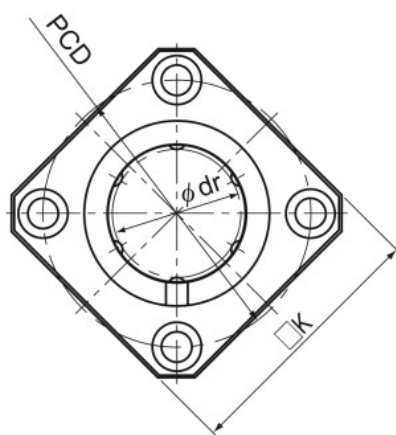


Model LMK-L



Model LMK-L

Model No.	Ball rows	Main dimensions							
		Inscribed bore diameter		Outer diameter		Length		Flange diameter	
		dr	Tolerance	D	Tolerance	L	Tolerance	D ₁	Tolerance
LMK 6L	4	6	0 -0.010	12	0	35	0 -0.3	28	0 -0.2
LMK 8L	4	8		15	-0.013	45		32	
LMK 10L	4	10		19	0 -0.016	55		39	
LMK 12L	4	12		21		57		42	
LMK 13L	4	13		23	61	43			
LMK 16L	5	16	28	70	48				
LMK 20L	5	20	0 -0.012	32	0 -0.019	80	54		
LMK 25L	6	25		40		112	62		
LMK 30L	6	30	0 -0.015	45	0 -0.022	123	74		
LMK 35L	6	35		52		135	82		
LMK 40L	6	40		60		154	96		
LMK 50L	6	50		80		192	116		
LMK 60L	6	60	0 -0.020	90	0 -0.025	211	134	0 -0.3	

Note) Since this model contains a synthetic resin retainer, do not use it at temperature exceeding 80°C.
If requiring a type equipped with a seal, indicate it when placing an order.

(Example) LMK50L UU

└─── Seal attached on both ends of the nut