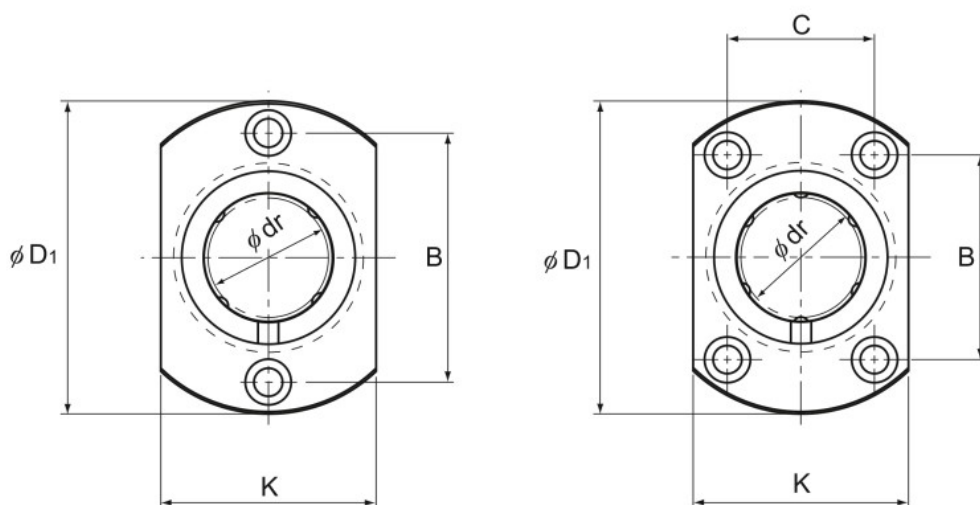


Model LMH



Models LMH6 to 13

Models LMH16 to 30

Model No.	Ball rows	Main dimensions							
		Inscribed bore diameter		Outer diameter		Length		Flange diameter	
		dr	Tolerance	D	Tolerance	L	Tolerance	D ₁	Tolerance
LMH 6	4	6	0 -0.009	12	0 -0.011	19	0 -0.2	28	0 -0.2
LMH 8S	4	8		15		17		32	
LMH 8	4	8		15		24		32	
LMH 10	4	10		19	29	39			
LMH 12	4	12		21	30	42			
LMH 13	4	13		23	32	43			
LMH 16	5	16	28	37	48				
LMH 20	5	20	0 -0.010	32	0 -0.016	42	54		
LMH 25	6	25		40		59	62		
LMH 30	6	30		45		64	74		

Note) Since this model contains a synthetic resin retainer, do not use it at temperature exceeding 80°C.
If requiring a type equipped with a seal, indicate it when placing an order.

(Example) LMH16 UU

└── Seal attached on both ends of the nut