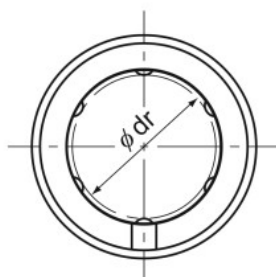


Model LM-L



Model LM-L

Model No.	Ball rows	Main					
		Inscribed bore diameter		Outer diameter		Length	
		dr	Tolerance	D	Tolerance	L	Tolerance
LM 3L	4	3	0 -0.010	7	0 -0.013	19	0 -0.3
LM 4L	4	4		8		23	
LM 5L	4	5		10		29	
LM 6L	4	6		12		35	
LM 8L	4	8		15		45	
LM 10L	4	10		19	55		
LM 12L	4	12		21	0 -0.016	57	
LM 13L	4	13		23	61		
LM 16L	5	16		28	70		
LM 20L	5	20		32	0 -0.019	80	
LM 25L	6	25	40	112	0 -0.4		
LM 30L	6	30	45	123			
LM 35L	6	35	52	0 -0.022		135	
LM 40L	6	40	60	154			
LM 50L	6	50	80	192			
LM 60L	6	60	90	0 -0.025		211	

Note) Since this model contains a synthetic resin retainer, do not use it at temperature exceeding 80°C.
If requiring a type equipped with a seal, indicate it when placing an order.

(Example) LM13L UU

Seal attached on both ends of the nut