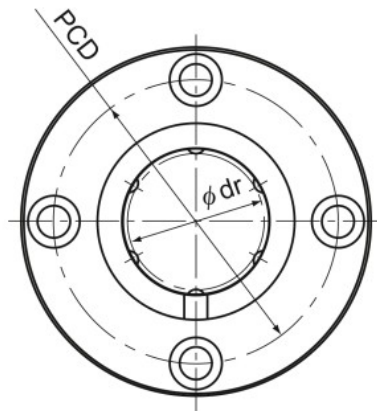


Model LMF-L



Model LMF-L

Model No.	Ball rows	Main dimensions							
		Inscribed bore diameter		Outer diameter		Length		Flange diameter	
		dr	Tolerance	D	Tolerance	L	Tolerance	D ₁	Tolerance
LMF 6L	4	6	0 -0.010	12	0	35	0 -0.3	28	0 -0.2
LMF 8L	4	8		15	-0.013	45		32	
LMF 10L	4	10		19	0	55		39	
LMF 12L	4	12		21	-0.016	57		42	
LMF 13L	4	13		23	0	61		43	
LMF 16L	5	16		28	0	70		48	
LMF 20L	5	20	32	0	80	54	0 -0.4		
LMF 25L	6	25	40	-0.019	112	62			
LMF 30L	6	30	45	0	123	74			
LMF 35L	6	35	52	0	135	82			
LMF 40L	6	40	60	-0.022	154	96			
LMF 50L	6	50	80	0	192	116			
LMF 60L	6	60	90	0 -0.020	-0.025	211	134	0 -0.3	

Note) Since this model contains a synthetic resin retainer, do not use it at temperature exceeding 80°C.

If requiring a type equipped with a seal, indicate it when placing an order.

(Example) LMF35L UU

└─── Seal attached on both ends of the nut