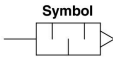


Silencer High Noise Reduction Type AN□02 Series



Over 35 dB (A) noise reduction
Case adopts flame resistant material



How to Order

AN **402** - **04**

Body size
202
302
402

Thread type	
Symbol	Type
NII	R
N	NPT

Port size		
Symbol	Port size	Applicable model
02	1/4	AN202
03	3/8	AN302
04	1/2	AN402

Specifications

Fluid	Compressed air
Max. operating pressure ⁽¹⁾	1.0 MPa
Noise reduction	35 dB (A) ⁽²⁾
Ambient and fluid temperature	5 to 60°C ⁽³⁾

Note 1) It indicates the inlet pressure for solenoid valve.

Note 2) The value may vary, depending on the pneumatic circuit or pressure that is exhausted from the solenoid valve.

Note 3) It can operate in temperature between -10 to 60°C if there is no risk of the moisture in the air freezing.

Refer to page 826 for Precautions on these products.

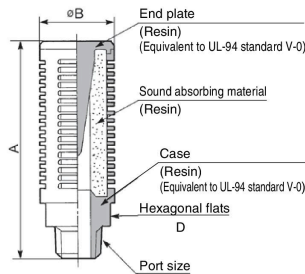
Performance/Dimensions

Model	Port size R	Effective area (mm ²)	Sonic conductance C [dm ³ /(s·bar)]	Weight (g)	Dimensions (mm)		
					A	B	D
AN202-02	1/4	35	7	16	64	22	19
AN302-03	3/8	60	12	33	84	28	24
AN402-04	1/2	90	18	47	95	34	24

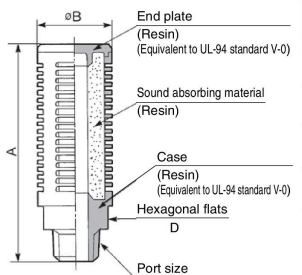
Note) Recommended flow rate is the flow at 0.5 MPa in the inlet pressure.

Construction/Parts/Dimensions

AN202



AN302/402



AN
AMC
AMV
AMP
SFE