

Dual Speed Controller Adjustable by Flat Head Screwdriver with One-touch Fitting

ASD□□□F-D Series

RoHS

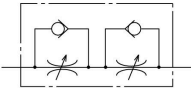
Model



Model	Port size	Applicable tubing O.D.													
		Metric size					Inch size								
		4	6	8	10	12	1/8"	5/32"	3/16"	1/4"	5/16"	3/8"			
ASD230F-M5	M5 x 0.8	●	●												
ASD330F-01	R 1/8		●	●											
ASD430F-02	R 1/4		●	●	●										
ASD530F-02	R 1/4		●	●	●	●									
ASD530F-03	R 3/8		●	●	●	●									
ASD630F-04	R 1/2				●	●									
ASD230F-U10/32	10-32 UNF						●	●	●	●					
ASD330F-N01	NPT 1/8									●	●				
ASD430F-N02	NPT 1/4										●	●	●		
ASD530F-N02	NPT 1/4										●	●	●	●	
ASD530F-N03	NPT 3/8										●	●	●	●	
ASD630F-N04	NPT 1/2											●	●	●	●

Specifications

Symbol



Fluid	Air
Proof pressure	1.5 MPa
Max. operating pressure	1 MPa
Min. operating pressure	0.1 MPa
Ambient and fluid temperature	-5 to 60°C (No freezing)
Applicable tubing material ⁽¹⁾	Nylon, Soft nylon, Polyurethane

Note 1) Use caution regarding the max. operating pressure when soft nylon or polyurethane tubing is used. (Refer to pages 464 and 465 for details.)

Note 2) Brass parts are all electroless nickel plated, provided as standard.

Flow Direction Symbols on Body

	Meter-out type	Meter-in type
Indication symbol		
Symbol		

Flow Rate and Sonic Conductance

	Model	ASD230F	ASD330F	ASD430F		ASD530F			ASD630F	
		Metric size	ø4, ø6	ø6, ø8	ø6	ø8, ø10	ø6	ø8	ø10, ø12	ø10
Tubing O.D.	Metric size	ø1/8"	ø3/16"	—	ø1/4"	ø1/4"	ø5/16"	ø3/8"	—	ø3/8"
	Inch size	ø5/32"	ø1/4"	—	ø5/16"	ø3/8"	—	—	—	—
Controlled flow	Flow rate (L/min (ANR))	75	175	295	350	500	600	700	1200	1300
	Free flow	Sonic conductance dm ³ /(s·bar)	0.22	0.54	0.9	1.06	1.52	1.82	2.14	3.66
Critical pressure ratio	Controlled flow	0.25	0.2	0.2		0.2			0.2	
	Free flow	0.3	0.15	0.15		0.15			0.15	

Note) Flow rate values are measured at 0.5 MPa and 20°C.

Made to Order



Lubricant: Vaseline

X12

Ex.) ASD230F-M5-04D-X12