

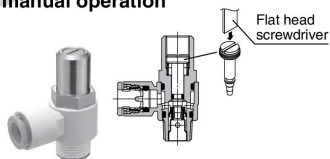
Speed Controller Adjustable by Flat Head Screwdriver with One-touch Fitting Elbow Type/Universal Type

AS□□□1F-D Series



Flow adjustable by flat head screwdriver

Prevention of an unnecessary manual operation



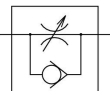
Elbow type



Universal type



Symbol



Flow Direction Symbols on Body

	Meter-out type	Meter-in type
Indication symbol		
Symbol		

Model

Elbow type	Universal type	Port size	Applicable tubing O.D.														
			Metric size						Inch size								
			3.2	4	6	8	10	12	1/8"	5/32"	3/16"	1/4"	5/16"	3/8"	1/2"		
AS12□1F-M5	AS13□1F-M5	M5 x 0.8	●	●	●												
AS22□1F-01	AS23□1F-01	R 1/8	●	●	●	●											
AS22□1F-02	AS23□1F-02	R 1/4		●	●	●	●										
AS32□1F-02	AS33□1F-02	R 1/4			●	●	●	●									
AS32□1F-03	AS33□1F-03	R 3/8			●	●	●	●									
AS42□1F-04	AS43□1F-04	R 1/2					●	●									
AS12□1F-U10/32	AS13□1F-U10/32	10-32 UNF							●	●	●	●					
AS22□1F-N01	AS23□1F-N01	NPT 1/8							●	●	●	●	●				
AS22□1F-N02	AS23□1F-N02	NPT 1/4								●	●	●	●	●			
AS32□1F-N02	AS33□1F-N02	NPT 1/4									●	●	●	●			
AS32□1F-N03	AS33□1F-N03	NPT 3/8										●	●	●			
AS42□1F-N04	AS43□1F-N04	NPT 1/2													●	●	

Note 1) * Elbow type only

Note 2) Meter-out and meter-in types can be visually differentiated by the flow direction symbol on the resin body.

Specifications

Fluid	Air
Proof pressure	1.5 MPa
Max. operating pressure	1 MPa
Min. operating pressure	0.1 MPa
Ambient and fluid temperature	-5 to 60°C (No freezing)
Applicable tubing material ⁽¹⁾	Nylon, Soft nylon, Polyurethane

Note 1) Use caution regarding the max. operating pressure when soft nylon or polyurethane tubing is used. (Refer to pages 464 and 465 for details.)

Note 2) Brass parts are all electroless nickel plated, provided as standard.

Flow Rate and Sonic Conductance

Model	AS12□1F	AS13□1F	AS22□1F-□01	AS23□1F-□01	AS22□1F-□02	AS23□1F-□02	AS32□1F	AS33□1F	AS42□1F	AS43□1F		
	Tubing O.D.	Metric size	ø3.2, ø4, ø6	ø3.2, ø4	ø6, ø8, ø10	ø4	ø6	ø8, ø10	ø6	ø8	ø10, ø12	ø10
	Inch size	ø1/8", ø5/32", ø3/16", ø1/4"	ø1/8", ø5/32", ø3/16", ø1/4"	ø5/16"	ø5/32", ø3/16"	ø1/4", ø5/16", ø3/8"	ø1/4", ø5/16"	ø3/8"	ø3/8"	ø3/8", ø1/2"	ø3/8"	ø1/2"
Controlled flow	Flow rate (L/min (ANR))	100	180	230	260	390	460	660	790	920	1580	1710
	Sonic Conductance dm ³ /(s·bar)	0.3	0.54	0.7	0.8	1.2	1.4	2	2.4	2.8	4.8	5.2
Critical pressure ratio	Controlled flow	0.2	0.25			0.3		0.25		0.25		0.25
	Free flow	0.4	0.2			0.3		0.2		0.3		0.3

Note) Flow rate values are measured at 0.5 MPa and 20°C.

Made to Order
Made to Order
(Refer to page 735 for details.)