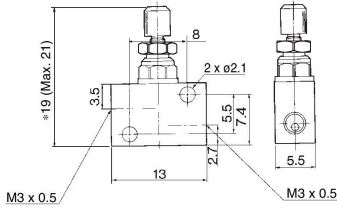
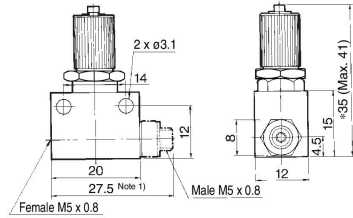


**Dimensions: AS1000-M3**



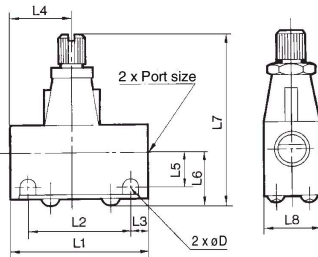
\* Reference dimensions

**Dimensions: AS1000-M5**



\* Reference dimensions  
Note 1) Dimension for AS1000-M5-N

**Dimensions: AS2000/3000**

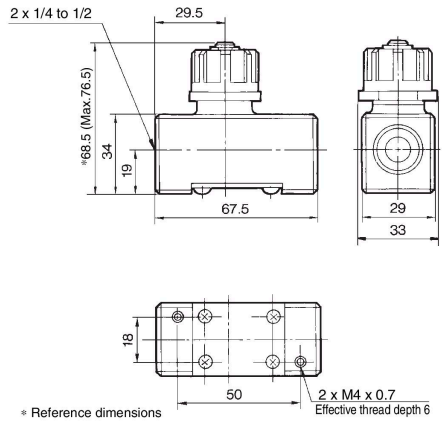


**Dimensions**

Model	Bore size	L1	L2	L3	L4	L5	L6	L7 (1)		L8	D
								Max.	Min.		
AS2000-01	1/8	40	30	5	17	10	15.5	54.5	50	16	4.5
AS2000-02	1/4	40	30	5	23	11.5	17	56	51.5	20	4.5
AS3000-02, 03	1/4, 3/8	56	45.5	5.25	25	13.2	20.6	68	61	26	5.5

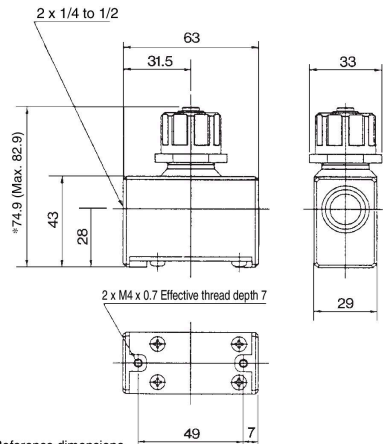
Note 1) L7: Reference dimensions

**Dimensions: AS4000**



\* Reference dimensions

**Dimensions: AS5000**



\* Reference dimensions

- AS-F
- TMH
- ASD
- AS**
- AS-FE
- KE
- AS-FG
- AS-FP
- AS-FM
- AS-D
- AS-T
- ASP
- ASN
- AQ
- ASV
- AK
- VCHC
- ASR
- ASQ