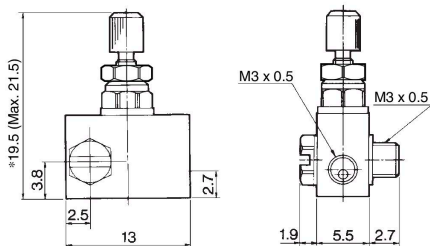


Speed Controller: Standard Type Elbow Type (Metal Body) **AS Series**

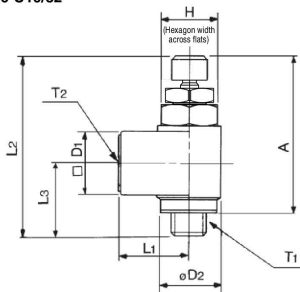
Dimensions: AS1400-M3



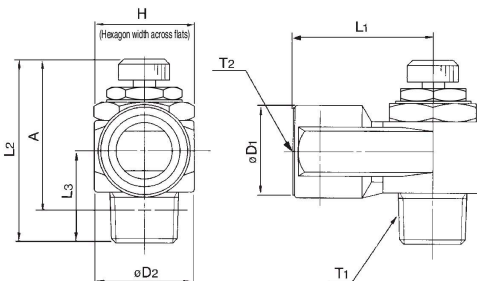
* Reference dimensions

Dimensions: AS-1200-M3, AS12□0-M5, AS22□0/32□0/42□0

AS1200-M3
AS12□0-M5
AS12□0-U10/32



AS22□0, 32□0, 42□0



Dimensions

Model	T1	T2	H (1)	L1	L2		L3	D1	D2	A (2)	
					Max.	Min.				Max.	Min.
AS1200-M3	M3 x 0.5	M3 x 0.5	4.5	6.6	23.5	21.5	8	5	5	20.5	18.5
AS12□0-M5	M5 x 0.8	M5 x 0.8	8	10	28.3	25.5	10.3	9	9	25	22.2
AS12□0-U10/32	10-32UNF	10-32UNF	12 (12.7)	18	35.5	30.5	13.2	14.3	14.6	32.4	27.4
AS22□0-01	1/8	1/8	17 (17.5)	27.2	40.3	35.3	17.5	18	19.5	34.8	29.8
AS32□0-03	3/8	3/8	19	30	45.8	40.8	19.7	22.5	24.3	40.6	35.6
AS42□0-04	1/2	1/2	24 (23.8)	38.5	54.7	49.7	25.8	27.5	28.5	47.4	42.4

Note 1) () are the dimensions of "NPT" thread.

Note 2) Reference thread dimensions after installation.

Note 3) L2: Reference dimensions

AS-F

TMH

ASD

AS

AS-FE

KE

AS-FG

AS-FP

AS-FM

AS-D

AS-T

ASP

ASN

AQ

ASV

AK

VCHC

ASR

ASQ