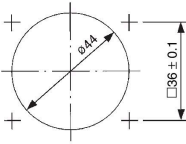


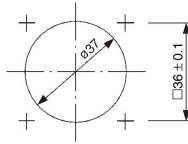
DM Series

Dimensions: DM6/12

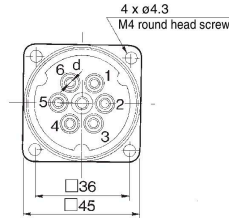
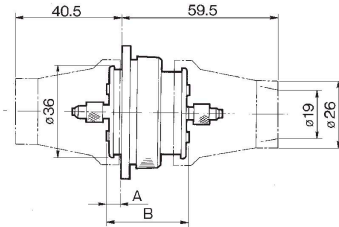
DM6



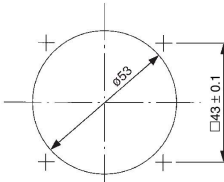
Panel mounting hole
(with the cover at socket side)



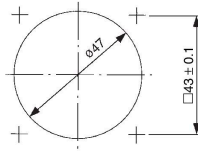
Panel mounting hole



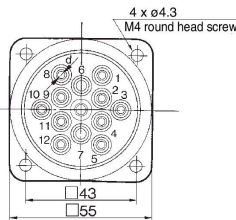
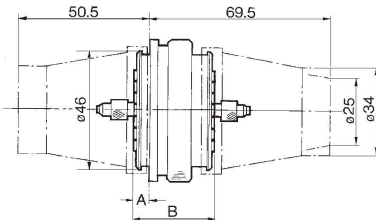
DM12



Panel mounting hole
(with the cover at socket side)



Panel mounting hole



Mode		Barb I.D. (d)	A	B
DM6-04N	DM12-04N	1.6	5	31
DM6-06N	DM12-06N	3		
DM6-04NU	DM12-04NU	1.6	6	31
DM6-06NU	DM12-06NU	3		