

**Male Connector: KCH**

<M5>



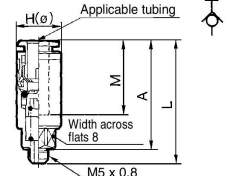
<R>



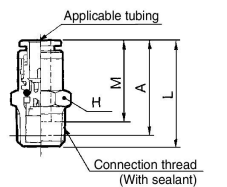
Applicable tubing O.D. (mm)	Connection thread R M	Model	H (width across flats)	L	A*	M	Effective area (mm <sup>2</sup> )		Weight (g)
							Nylon	Urethane	
4	M5 x 0.8	<b>KCH04-M5</b>	9.8	30.8	27.3	18	2.1	2.1	8
	1/8	<b>KCH04-01S</b>	10	26.1	22.1	18	2.6	2.6	
6	M5 x 0.8	<b>KCH06-M5</b>	11.8	32.4	28.9	19.5	2.4	2.4	10
	1/8	<b>KCH06-01S</b>	12	37.4	33.4	19	6.8	6.8	16
	1/4	<b>KCH06-02S</b>	14	28.9	22.9	19	6.8	6.8	14
8	1/8	<b>KCH08-01S</b>	14	42.4	38.4	20			20
	1/4	<b>KCH08-02S</b>	14	45.7	39.7	21.5	16.2	13.1	27
	3/8	<b>KCH08-03S</b>	17	34	27.5	24			25
10	1/4	<b>KCH10-02S</b>	17	50.5	44.5	24	25.6	20.4	34
	3/8	<b>KCH10-03S</b>	19	51.5	45	24			43
12	3/8	<b>KCH12-03S</b>	19	54.2	47.7	25.5	35.4	30.4	48
	1/2	<b>KCH12-04S</b>	22	41.6	33.6	25.5			41

\* Reference dimensions after R thread installation.

<M5>



<R>

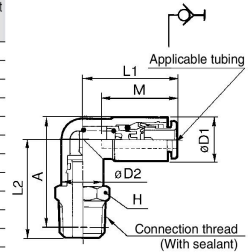


**Male Elbow: KCL**



Applicable tubing O.D. (mm)	Connection thread R M	Model	H (width across flats)	Note) øD1	øD2	L1	L2	A*	M	Effective area (mm <sup>2</sup> )		Weight (g)	
										Nylon	Urethane		
4	M5 x 0.8	<b>KCL04-M5</b>	8	10.4	8	25.3	16.7	18.4	18	1.9	1.9	6	
	1/8	<b>KCL04-01S</b>	10				22.1	24.2		2.3	2.3	11	
6	M5 x 0.8	<b>KCL06-M5</b>	8	12.8	8	26.8	17.4	20.3	19.5	2.2	2.2	7	
	1/8	<b>KCL06-01S</b>	12				24.2	27.5		6.2	6.2	13	
	1/4	<b>KCL06-02S</b>	14				28.6	29.5		19		21	
8	1/8	<b>KCL08-01S</b>	14	15.2	14	34.1	26.2	30.7	21.5	13.0	10.5	16	
	1/4	<b>KCL08-02S</b>	17				30.6	32.7				24	24
	3/8	<b>KCL08-03S</b>	17				30	34.2				24	37
10	1/4	<b>KCL10-02S</b>	17	18.5	17	38	33.4	37.2	24	19.5	16.5	29	
	3/8	<b>KCL10-03S</b>	17				34.8	38.7				24	38
12	3/8	<b>KCL12-03S</b>	22	20.9	20.9	40.7	39.2	44.3	25.5	24.8	21.3	63	
	1/2	<b>KCL12-04S</b>	22				42.3	45.7				25.5	81

\* Reference dimensions after R thread installation.  
Note) øD1: Max. diameter

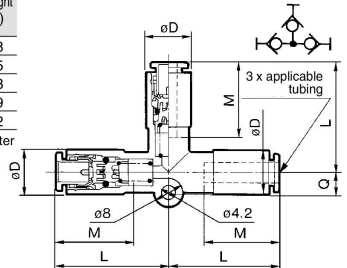


**Union Tee: KCT**



Applicable tubing O.D. (mm)	Model	Note) øD	L	Q	M	Effective area (mm <sup>2</sup> )		Weight (g)
						Nylon	Urethane	
4	<b>KCT04-00</b>	10.4	28.6	5.3	18	2.8	2.8	8
6	<b>KCT06-00</b>	12.8	32.7	6.1	19	7.6	7.6	15
8	<b>KCT08-00</b>	15.2	39.2	7.1	21.5	13.7	11.1	23
10	<b>KCT10-00</b>	18.5	45.5	7.9	24	21.1	19.0	39
12	<b>KCT12-00</b>	20.9	49.2	8.6	25.5	28.3	24.3	52

Note) øD: Max. diameter



[Click here for applicable color caps.](#)

- KQ2**
- KQB2**
- KS**
- KX**
- KM**
- KF**
- M**
- H/DL**
- L/L**
- KC**
- KK**
- KK130**
- DM**
- KDM**
- KB**
- KR**
- KA**
- KQG2**
- KG**
- KFG2**
- MS**
- KKA**
- KP**
- LQ**
- MQR**
- T**
- IDK**