

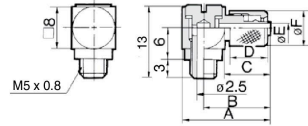
# M Series

## M5 Series

### Hose Elbow: M-5HL-4/-6



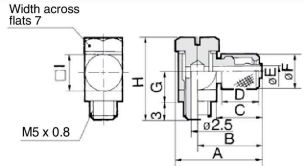
Model	A	B	C	D	øE	øF	Effective area (mm <sup>2</sup> )	Weight (g)
M-5HL-4	16.5	12.5	8.5	7	1.8	6.5	1.4	4.4
M-5HL-6	17.5	13.5	9.5	8	2.5	8.5	2.4	5.2



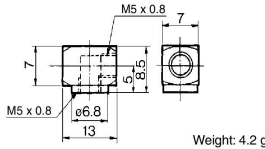
### Hose Elbow: M-5HLH-4/-6



Model	A	B	C	D	øE	øF	G	H	I	Effective area (mm <sup>2</sup> )	Weight (g)
M-5HLH-4	15.5	12	8.5	7	1.8	6.5	5.5	15	7	1.4	4.5
M-5HLH-6	17.5	13.5	9.5	8	2.5	8.5	6	16	8	2.4	6.6

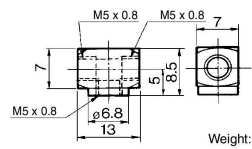


### Elbow: M-5L



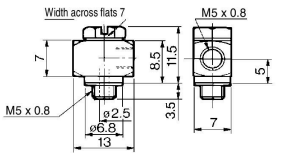
Weight: 4.2 g

### Tee: M-5T



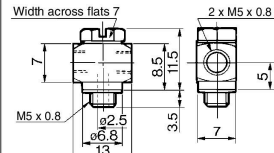
Weight: 3.5 g

### Universal Elbow: M-5UL



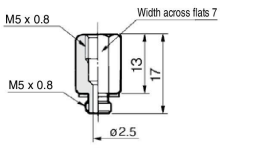
Effective area: 2.4 mm<sup>2</sup> Weight: 5.3 g

### Universal Tee: M-5UT



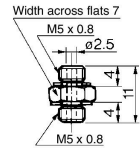
Effective area: 2.4 mm<sup>2</sup> Weight: 4.8 g

### Extension Fitting: M-5J



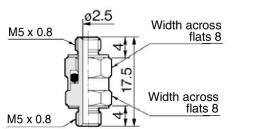
Effective area: 4.0 mm<sup>2</sup> Weight: 3.6 g

### Nipple: M-5N



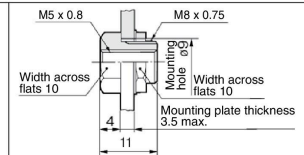
Effective area: 4.0 mm<sup>2</sup> Weight: 1.5 g

### Universal Nipple: M-5UN



Effective area: 4.0 mm<sup>2</sup> Weight: 3.9 g

### Bulkhead Union: M-5E



For the plate thickness 3.5 to 6 mm, give the plate tapping M8 x 0.75, and then screw-in. Weight: 4.6 g