

# M Series

## Dimensions

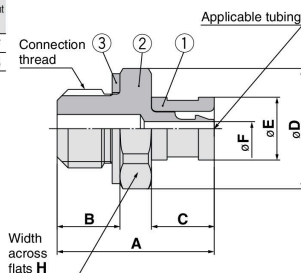
### Barb Fitting: M-3AU-2, M-5AU-2



Applicable tubing O.D. / I.D. (mm)	Connection thread	Model	H	A	B	C	D	E	F	Weight (g)
ø2 / ø1.2	M3 x 0.5	M-3AU-2	4.5	9	3	4	5	4	0.9	0.7
	M5 x 0.8	M-5AU-2	7	10	4	4	7.7	4	0.9	1.5

#### Component Parts

No.	Description	Material	Note
1	Sleeve	C3604	Electroless nickel plated
2	Barb fitting	C3604	Electroless nickel plated
3	Gasket	NBR, Stainless steel 304	—



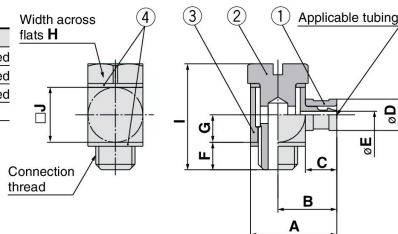
### Barb Elbow: M-3ALU-2, M-5ALHU-2



Applicable tubing O.D. / I.D. (mm)	Connection thread	Model	H	A	B	C	D	E	F	G	I	J	Weight (g)
ø2 / ø1.2	M3 x 0.5	M-3ALU-2	5	9	6.5	4	4	0.9	2.5	2.5	9.4	5	1.6
	M5 x 0.8	M-5ALHU-2	7	11	7.5	4	4	0.9	3.5	3.5	13.5	7	3.5

#### Component Parts

No.	Description	Material	Note
1	Sleeve	C3604	Electroless nickel plated
2	Stud	C3604	Electroless nickel plated
3	Barb elbow	C3604	Electroless nickel plated
4	Gasket	NBR, Stainless steel 304	—



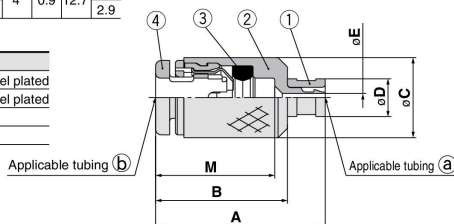
### Barb One-touch: M-32F-2, M-04F-2



Applicable tubing (mm)	Model		A	B	C	D	E	M	Weight (g)
	① (O.D. / I.D.)	② (O.D.)							
ø2 / ø1.2	ø3.2	M-32F-2	17.7	13.7	7.5	4	0.9	12.7	2.4
		M-04F-2	18	14	8.5	4	0.9	12.7	2.9

#### Component Parts

No.	Description	Material	Note
1	Sleeve	C3604	Electroless nickel plated
2	Body	C3604	Electroless nickel plated
3	Seal	NBR	—
4	Cassette	POM, Stainless steel 304	—



### Plug-in Reducer: M-32R-2, M-04R-2

Applicable tubing O.D. / I.D. (mm)	Fitting size øD	Model	A	B <sup>(1)</sup>	B <sup>(2)</sup>	C	E	F	Weight (g)
ø2 / ø1.2	ø3.2	M-32R-2	36	23.3	20.5	31.5	0.9	4	0.7
	ø4	M-04R-2	36.5	23.8	20.5	32	0.9	4	0.8

Note 1) Dimensions when connected to the M5 and M6 connection threads for KJ series and KQ series.

Note 2) Dimensions when connected to KQ series.

#### Component Parts

No.	Description	Material	Note
1	Sleeve	C3604	Electroless nickel plated
2	Studded body	C3604	Electroless nickel plated
3	Stem	PP	—

