

# Vacuum Regulator

# IRV10/20 Series

RoHS

## How to Order

### Standard connections

IRV 20 - [ ] C08 [ ] [ ]

#### Body size

10	Max. flow 140 L/min (ANR)
20	Max. flow 240 L/min (ANR)

#### Fittings

Nil	Straight
L	Elbow



Straight

Elbow

#### Connection tubing O.D.

Symbol	Tubing O.D.	IRV10	IRV20
C06	Metric	ø6	●
		ø8	●
		ø10	—
N07	Inch	ø1/4"	●
N09		ø5/16"	●
N11		ø3/8"	●

#### Accessory ② [Supplied with product]

Nil	None Note 1)	
GN	Gauge nut assembly Note 2)	
G	Pressure gauge Note 3) Note 4)	
	(IRV10: GZ33-K-01, IRV20: GZ43-K-01)	
ZN	Digital pressure switch Note 4)	NPN open collector 1 output With ZSE30A-01-N-ML
ZP		PNP open collector 1 output With ZSE30A-01-P-ML
ZA		NPN open collector 2 outputs With ZSE30A-01-A-ML
ZB		PNP open collector 2 outputs With ZSE30A-01-B-ML

Note 1) Two plug nuts are mounted on the gauge port. When the Rc1/8 port is required, please order the optional gauge nut assembly P601010-18 separately. (Refer to page 834.)

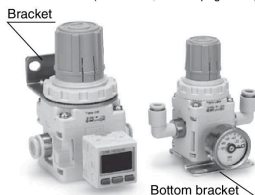
Note 2) One plug nut, one gauge nut (Rc1/8), and two clips are included. The pressure gauge and digital pressure switch are not included.

Note 3) Pressure gauge accuracy: Within ±3% of full scale

Note 4) Plug nut and gauge nut are included. (For details, refer to page 837.)

#### Accessory ① [Supplied with product]

Nil	None
B	With bracket
L	With bottom bracket



Bracket

Bottom bracket

### Single sided connections

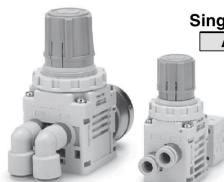
IRV 20 A - [ ] C08 [ ] [ ] - [ ]

#### Body size

10	Max. flow 140 L/min (ANR)
20	Max. flow 240 L/min (ANR)

#### Single sided connections

A	Single sided connections
---	--------------------------



Elbow

Straight

#### Connection tubing O.D.

Symbol	Tubing O.D.	IRV10A	IRV20A
C06	Metric	ø6	●
		ø8	●
		ø10	—
N07	Inch	ø1/4"	●
N09		ø5/16"	●
N11		ø3/8"	●

#### Made to Order

For details, refer to page 836.

Symbol	Specification
X1	Integrated digital pressure switch for panel mounting

#### Accessory ② [Supplied with product]

Nil	None Note 1)	
GN	Gauge nut assembly Note 2)	
G	Pressure gauge Note 3) Note 4)	
	(IRV10A: GZ33-K-01, IRV20A: GZ43-K-01)	
ZN	Digital pressure switch Note 4)	NPN open collector 1 output With ZSE30A-01-N-ML
ZP		PNP open collector 1 output With ZSE30A-01-P-ML
ZA		NPN open collector 2 outputs With ZSE30A-01-A-ML
ZB		PNP open collector 2 outputs With ZSE30A-01-B-ML

Note 1) Two plug nuts are mounted on the gauge port. When the Rc1/8 port is required, please order the optional gauge nut assembly P601010-18 separately. (Refer to page 834.)

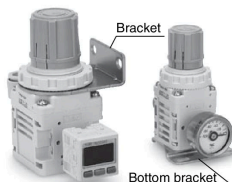
Note 2) One gauge nut (Rc1/8) and one clip are included. The pressure gauge and digital pressure switch are not included.

Note 3) Pressure gauge accuracy: Within ±3% of full scale

Note 4) Gauge nut is included. (For details, refer to page 837.)

#### Accessory ① [Supplied with product]

Nil	None
B	With bracket
L	With bottom bracket



Bracket

Bottom bracket

ARJ

AR425 to 935

ARX

AMR

ARM

ARP

IR□-A

IR

IRV

VEV

SRH

SRP

SRF

ITV

IC

ITVH

ITVX

PVQ

VY1

VBA

VBAT

AP100