

Applicable to the
LEC□ series

Electric Gripper 2-Finger Type

LEHZ Series LEHZ10, 16, 20, 25, 32, 40

Refer to page 439-1 for the communication protocols EtherCAT®, EtherNet/IP™, PROFINET, DeviceNet™, and IO-Link.

How to Order

LEHZ **10** **K** 2 - **4** - **S1** **6N** **1**

① ② ③ ④ ⑤ ⑥ ⑦ ⑧ ⑨ ⑩ ⑪

① Size

10
16
20
25
32
40

② Motor size

Nil	Basic
L (Note)	Compact

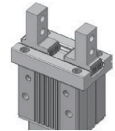
Note) Size: 10, 16, 20, 25 only

③ Lead

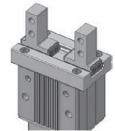
K	Basic
---	-------

④ 2-finger type

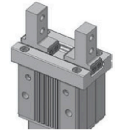
Finger options

Nil: Basic
(Tapped in open/close direction)

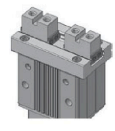
A: Side tapped mounting



B: Through-hole in open/close direction



C: Flat fingers



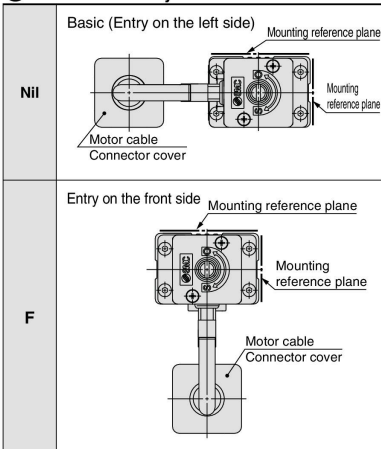
⑤ Stroke [mm]

Stroke/both sides	Size
4	10
6	16
10	20
14	25
22	32
30	40

⑥ Finger options

Nil	Basic (Tapped in open/close direction)
A	Side tapped mounting
B	Through-hole in open/close direction
C	Flat fingers

⑦ Motor cable entry



⚠ Caution

[CE-compliant products]

① EMC compliance was tested by combining the electric actuator LEHZ series and the controller LEC series.

The EMC depends on the configuration of the customer's control panel and the relationship with other electrical equipment and wiring. Therefore, conformity to the EMC directive cannot be certified for SMC components incorporated into the customer's equipment under actual operating conditions. As a result, it is necessary for the customer to verify conformity to the EMC directive for the machinery and equipment as a whole.

② CC-Link direct input type (LECPMJ) is not CE-compliant.

[UL-compliant products]

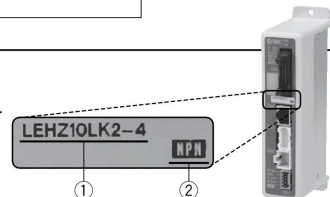
When conformity to UL is required, the electric actuator and controller/driver should be used with a UL1310 Class 2 power supply.

The actuator and controller/driver are sold as a package.

Confirm that the combination of the controller/driver and the actuator is correct.

<Check the following before use.>

- ① Check the actuator label for model number. This matches the controller/driver.
- ② Check Parallel I/O configuration matches (NPN or PNP).

* Refer to the operation manual for using the products. Please download it via our website, <http://www.smcworld.com>