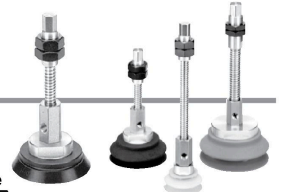


ZP Series

How to Order



Vacuum inlet direction **Lateral**

With buffer ZPX 40 H N J 25 - B01 - A18

Pad diameter

Symbol	Pad diameter
40	ø40
50	ø50
63	ø63
80	ø80
100	ø100
125	ø125

Pad type (★)

Symbol	Type
H	Heavy-duty (Flat with rib)
HB	Heavy-duty (Bellows)

Vacuum inlet thread size

Symbol	Thread size
B01	Rc1/8
N01	NPT1/8
T01	NPTF1/8

Mounting thread size

Symbol	Thread size
A18	M18 x 1.5 (ø40 to ø80)
A22	M22 x 1.5 (ø100, ø125)

Pad material (□)

Symbol	Material
N	NBR
S	Silicone rubber
U	Urethane rubber
F	FKM
E	EPR

Buffer body material (★)

Symbol	Material
J	Aluminum alloy
JB	Brass + With bushing
JF	Steel + With bushing

Buffer stroke (■)

Stroke	ø40	ø50	ø63	ø80	ø100	ø125
25	●	●	●	●	●	●
50	●	●	●	●	●	●
75	●	●	●	●	●	●
100	—	—	—	—	●	●

Replacement Part No.

Model	Pad unit part no.	Buffer assembly part no.
ZPX40□★25-(B/N/T)01-A18	ZP40□□	ZPB-X1★25-(B/N/T)01
ZPX40□★50-(B/N/T)01-A18		ZPB-X1★50-(B/N/T)01
ZPX40□★75-(B/N/T)01-A18		ZPB-X1★75-(B/N/T)01
ZPX50□★25-(B/N/T)01-A18	ZP50□□	ZPB-X1★25-(B/N/T)01
ZPX50□★50-(B/N/T)01-A18		ZPB-X1★50-(B/N/T)01
ZPX50□★75-(B/N/T)01-A18		ZPB-X1★75-(B/N/T)01
ZPX63□★25-(B/N/T)01-A18	ZP63□□	ZPB-X2★25-(B/N/T)01
ZPX63□★50-(B/N/T)01-A18		ZPB-X2★50-(B/N/T)01
ZPX63□★75-(B/N/T)01-A18		ZPB-X2★75-(B/N/T)01
ZPX80□★25-(B/N/T)01-A18	ZP80□□	ZPB-X2★25-(B/N/T)01
ZPX80□★50-(B/N/T)01-A18		ZPB-X2★50-(B/N/T)01
ZPX80□★75-(B/N/T)01-A18		ZPB-X2★75-(B/N/T)01
ZPX100□★25-(B/N/T)01-A22	ZP100□□	ZPB-X3★25-(B/N/T)01
ZPX100□★50-(B/N/T)01-A22		ZPB-X3★50-(B/N/T)01
ZPX100□★75-(B/N/T)01-A22		ZPB-X3★75-(B/N/T)01
ZPX100□★100-(B/N/T)01-A22	ZP125□□	ZPB-X3★100-(B/N/T)01
ZPX125□★50-(B/N/T)01-A22		ZPB-X3★50-(B/N/T)01
ZPX125□★75-(B/N/T)01-A22		ZPB-X3★75-(B/N/T)01
ZPX125□★100-(B/N/T)01-A22	ZPB-X3★100-(B/N/T)01	

Note 1) * in the table indicates the pad type.

Note 2) □ in the table indicates the pad material.

Note 3) ★ in the table indicates the buffer body material.

Buffer Specifications (Rotating)

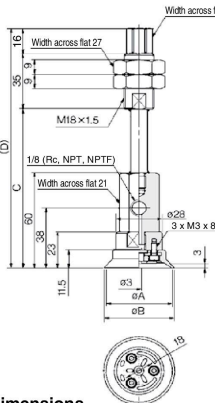
Pad diameter	ø40 to ø80	ø100, ø125
Stroke (mm)	25, 50, 75	25, 50, 75, 100
Spring reactive force	At 0 stroke: 6.9 N At full stroke: 11.8 N	10 N 15 N

Nut Tightening Torque

Mounting thread size	Buffer body material		(N·m)	
	Aluminum alloy	Brass + With bushing	Steel + With bushing	
M18 x 1.5	9.5 to 10.5 N·m	28 to 32 N·m	48 to 52 N·m	
M22 x 1.5	9.5 to 10.5 N·m	45 to 50 N·m	75 to 80 N·m	

Dimensions: With Buffer

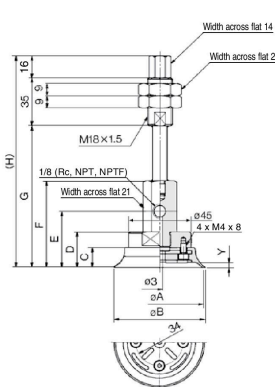
ZPX⁴⁰₅₀H□★■-□01-A18



Dimensions

Model	A	B	C	D
ZPX40H□★25-□01-A18	100	151		
ZPX40H□★50-□01-A18	40	135	186	
ZPX40H□★75-□01-A18		171	222	
ZPX50H□★25-□01-A18		100	151	
ZPX50H□★50-□01-A18	50	135	186	
ZPX50H□★75-□01-A18		171	222	

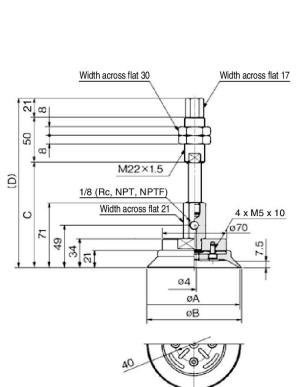
ZPX⁶³₈₀H□★■-□01-A18



Dimensions

Model	A	B	C	D	E	F	G	H	Y
ZPX63H□★25-□01-A18	63	65	14.5	26	41	63	103	154	
ZPX63H□★50-□01-A18							138	189	3.5
ZPX63H□★75-□01-A18							174	225	
ZPX80H□★25-□01-A18							105	156	
ZPX80H□★50-□01-A18	80	82	16.5	28	43	65	140	191	4.5
ZPX80H□★75-□01-A18							176	227	

ZPX¹⁰⁰₁₂₅H□★■-□01-A22



Dimensions

Model	A	B	C	D
ZPX100H□★25-□01-A22	100	103	115	186
ZPX100H□★50-□01-A22			151	222
ZPX100H□★75-□01-A22			191	262
ZPX100H□★100-□01-A22			226	297
ZPX125H□★25-□01-A22			115	186
ZPX125H□★50-□01-A22	125	128	151	222
ZPX125H□★75-□01-A22			191	262
ZPX125H□★100-□01-A22			226	297