



# Flat Type Pad/Bellows Type Pad with Groove

Symbol/Form

UM: Flat type with groove  
BM: Bellows type with groove

Pad diameter  $\phi 32, \phi 40, \phi 50, \phi 63, \phi 80, \phi 100, \phi 125$

## How to Order

Pad unit **ZP3E-32UMN-P**



### Pad diameter

Symbol	Pad diameter
32	$\phi 32$
40	$\phi 40$
50	$\phi 50$
63	$\phi 63$
80	$\phi 80$
100	$\phi 100$
125	$\phi 125$

### Plate (★)

Nil	None
P	With plate

### Pad material

Symbol	Material
N	NBR
S	Silicone rubber
U	Urethane rubber
F	FKM
CL	Mark-free NBR

### Pad form

Symbol	Form
UM	Flat type with groove
BM	Bellows type with groove

### Plate Unit Part No.

Model	Form/Diameter						Flat type with groove (UM)						Bellows type with groove (BM)						
	32	40	50	63	80	100/125	32	40	50	63	80	100/125	32	40	50	63	80	100/125	
ZP3EA-P1	●	●	—	—	—	—	●	●	—	—	—	—	—	—	—	—	—	—	—
ZP3EA-P2	—	—	●	—	—	—	—	—	●	—	—	—	—	—	—	—	—	—	—
ZP3EA-P3	—	—	—	●	●	—	—	—	—	●	—	—	—	—	—	—	—	—	—
ZP3EA-P4	—	—	—	—	●	—	—	—	—	—	●	—	—	—	—	—	—	—	—
ZP3EA-P5	—	—	—	—	—	●	—	—	—	—	—	●	—	—	—	—	—	—	—
ZP3EA-P6	—	—	—	—	—	—	—	—	—	—	—	—	—	—	—	—	—	—	●

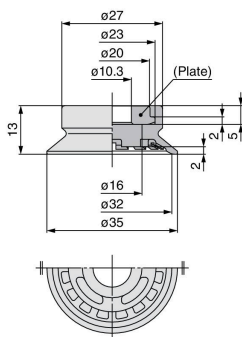
Pad diameter  $\phi 32$  to  $\phi 50$

Pad form Flat type with groove

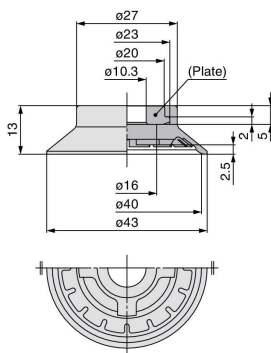
## Dimensions: Pad Unit



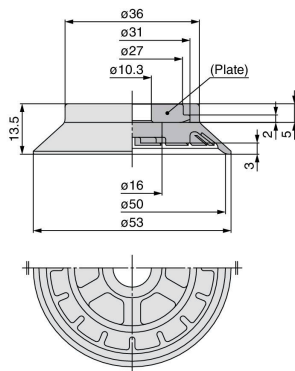
### ZP3E-32UM□-★



### ZP3E-40UM□-★



### ZP3E-50UM□-★



### Weights

Model	Pad material			[g]
	N/U/CL	S	F	
ZP3E-32UM□	4.2	3.9	6.7	
ZP3E-32UM□-P	7.9	7.6	10.4	

### Weights

Model	Pad material			[g]
	N/U/CL	S	F	
ZP3E-40UM□	5.3	4.9	8.4	
ZP3E-40UM□-P	9.0	8.5	12.1	

### Weights

Model	Pad material			[g]
	N/U/CL	S	F	
ZP3E-50UM□	9.4	8.7	14.9	
ZP3E-50UM□-P	17.1	16.3	22.5	