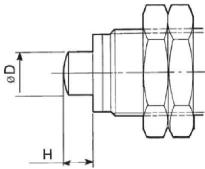
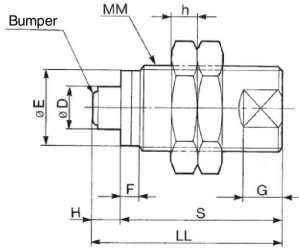


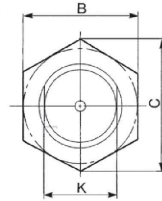
## Dimensions



**RBQ series  
Basic type**



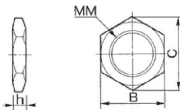
**RBQC series  
With bumper**



Model		Shock absorber									Hexagon nut			
Basic type	With bumper	D	E	F	H	K	G	LL	MM	S	B	C	h	
<b>RBQ1604</b>	<b>RBQC1604</b>	6	14.2	3.5	4	14	7	31	M16 x 1.5	27	22	25.4	6	
<b>RBQ2007</b>	<b>RBQC2007</b>	10	18.2	4	7	18	9	44.5	M20 x 1.5	37.5	27	31.2	6	
<b>RBQ2508</b>	<b>RBQC2508</b>	12	23.2	4	8	23	10	52	M25 x 1.5	44	32	37	6	
<b>RBQ3009</b>	<b>RBQC3009</b>	16	28.2	5	8.5	28	12	61.5	M30 x 1.5	53	41	47.3	6	
<b>RBQ3213</b>	<b>RBQC3213</b>	18	30.2	5	13	30	13	76	M32 x 1.5	63	41	47.3	6	

### Hexagon Nut

(2 pcs. standard equipment)



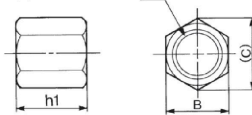
Material: Special steel  
Treatment: Zinc trivalent chromated

Part no.	MM	h	B	C
<b>RBQ16J</b>	M16 x 1.5	6	22	25.4
<b>RBQ20J</b> <sup>(1)</sup>	M20 x 1.5	6	27	31.2
<b>RBQ25J</b>	M25 x 1.5	6	32	37
<b>RBQ30J</b>	M30 x 1.5	6	41	47.3
<b>RBQ32J</b>	M32 x 1.5	6	41	47.3

Note 1) In the case of RB20J, RB and RBQ are common.

### Option

#### Stopper nut



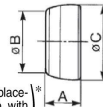
Material: Carbon steel  
Treatment: Zinc trivalent chromated

Part no.	B	C	h <sub>1</sub>	MM
<b>RBQ16S</b>	22	25.4	12	M16 x 1.5
<b>RBQ20S</b> <sup>(2)</sup>	27	31.2	16	M20 x 1.5
<b>RBQ25S</b>	32	37	18	M25 x 1.5
<b>RBQ30S</b>	41	47.3	20	M30 x 1.5
<b>RBQ32S</b>	41	47.3	25	M32 x 1.5

Note 2) In the case of RB20S, RB and RBQ are common.

### Replacement Parts

#### Bumper



<sup>\*</sup> These are the replacement part for the with bumper type. Not available for the basic type.

Material: Polyurethane

Part no.	A	B	C
<b>RBQC16C</b>	3.5	4	4.7
<b>RBQC20C</b>	4.5	8	8.3
<b>RBQC25C</b>	5	8.3	9.3
<b>RBQC30C</b>	6	11.3	12.4
<b>RBQC32C</b>	6.6	13.1	14.4

**RJ**

**RB**

**D-□**

**-X□**