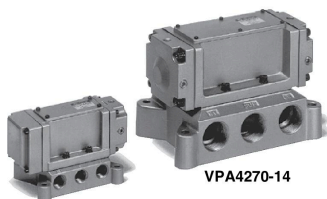


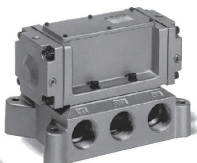
# 5 Port Air Operated Valve

## VPA4□50/4□70 Series

### How to Order



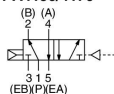
VPA4150-04



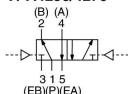
VPA4270-14

#### Symbol

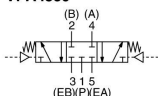
2 position single  
VPA4150/4170



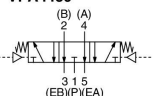
2 position double  
VPA4250/4270



3 position closed center  
VPA4350



3 position exhaust center  
VPA4450



**VPA4 1 5 0 - 10 -**

VP 5 port  
Air operated valve

**Function**

1	2 position single pilot
2	2 position double pilot
3	3 position closed center
4	3 position exhaust center

Note) 3 position is not available on VPA4□70 series.

**Body size**

5	3/4 standard
7	1 1/4 standard

**Piping**

0	Side ported
1*	Bottom ported
4	W/o sub-plate

\* Semi-standard

**Thread type**

NH	Rc
F	G
N	NPT
T	NPTF

**Port size**

Symbol	Port size	Applicable valve model
00	Without sub-plate	VPA4□54, 4□74
03	3/8 (10A)	VPA4□5□ <sub>1</sub>
04	1/2 (15A)	
06	3/4 (20A)	
10*	1 (25A)	VPA4□7□ <sub>1</sub>
12	1 1/4 (32A)	
14	1 1/2 (40A)	

\* Side piping only

### Specifications

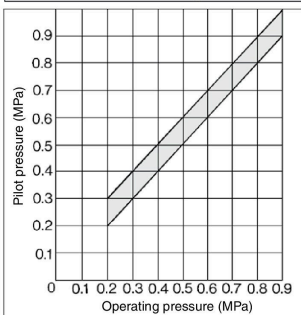
Fluid	Air
Operating pressure range (MPa)	0.2 to 0.9
Pilot pressure range (MPa)	Refer to the pilot pressure graph shown in below.
Ambient and fluid temperature (°C)	0 to 60
Lubrication <sup>(1)</sup>	Required (Use turbine oil Class 1 ISO VG32.)
Mounting orientation	Free
Impact/Vibration resistance (m/s <sup>2</sup> ) <sup>(2)</sup>	150/50

Note 1) Use turbine oil Class 1 (ISO VG32).

Note 2) Impact resistance: No malfunction from test using drop impact tester, to axis and right angle directions of main valve, each one time when pilot signal is ON and OFF. (Valve in the initial stage)

Vibration resistance: No malfunction from test with 45 to 1000 Hz one sweep, to axis and right angle direction of main valve, each one time when pilot signal ON and OFF. (Value in the initial stage)

### Pilot Pressure Range



### Precautions

**Be sure to read this before handling the products. Refer to back page 50 for Safety Instructions and pages 3 to 9 for 3/4/5 Port Solenoid Valve Precautions.**

### Caution

- Lubrication**  
Use turbine oil Class 1 (ISO VG32).
- Refer to page 363 regarding piping, air quality, operating condition and 3 position closed center.