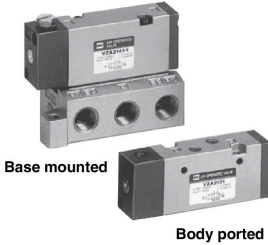


5 Port Air Operated Valve

VZA2000 Series



Specifications

Fluid	Air	
	Operating pressure range (MPa)	VZA2121, 2141
	VZA2221, 2241	0 to 1.0
Pilot pressure range (MPa)	0.1 to 1.0	
Impact/Vibration resistance (m/s ²) ^{Note)}	150/50	

Operating pressure ≤ Pilot pressure

Note) Impact resistance: No malfunction from test using drop impact tester, to axis and right angle directions of main valve, each one time when pilot signal ON and OFF. (Value in the initial stage)

Vibration resistance: No malfunction from test with 8.3 to 2000 Hz 1 sweep, to axis and right angle directions of main valve, each one time when pilot signal ON and OFF. (Value in the initial stage)

Model

Valve model	Type of actuation	Port size	Flow rate characteristics						Pilot port size	Pilot port piping location	
			1→4/2(P→A/B)			4/2→5/3(A/B→EA/EB)					
			C [dm ³ /(s·bar)]	b	Cv	C [dm ³ /(s·bar)]	b	Cv			
Body ported	2 position	M5 x 0.8	Single	0.60	0.43	0.15	0.59	0.30	0.15	M5 x 0.8	Body side
			Double	0.60	0.43	0.15	0.59	0.30	0.15		
	3 position		Closed center	0.56	0.15	0.13	0.59	0.22	0.14		
			Exhaust center	0.60	0.20	0.15	0.59	0.22	0.14		
Base mounted (with sub-plate)	2 position	Rc 1/8	Single	1.0	0.30	0.25	0.90	0.25	0.21	M5 x 0.8	Sub-plate side
			Double	1.0	0.30	0.25	0.90	0.25	0.21		Body side
	3 position		Closed center	0.90	0.25	0.21	0.71	0.30	0.19		Sub-plate side
			Exhaust center	1.0	0.30	0.25	0.90	0.25	0.21		Body side
											Sub-plate side
											Body side
											Sub-plate side
											Body side
								Body side			

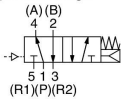
Note) Model number for base mounted type without sub-plate is VZA2□41- $\frac{1}{2}$.

Compatibility with universal porting is possible except for with the single type.

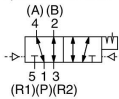
Symbol

Body ported

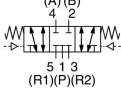
2 position single



2 position double



3 position closed center

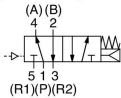


3 position exhaust center

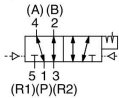


Base mounted

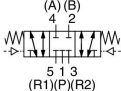
2 position single



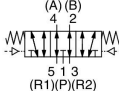
2 position double



3 position closed center



3 position exhaust center



* To order valves and blanking plate assembly mounted onto the manifold, list valves and blank plate assembly with manifold base part number.

<Example: Body ported->

VV5ZA2-20-051.....1 pc.

VZA2121-M5.....1 pc.

VZA2221-M5.....3 pcs.

VVZ2000-31A-2.....1 pc.

<Example: Base mounted->

VV5ZA2-50-051-01.....1 pc.

VZA2141-2.....1 pc.

VZA2241-2.....3 pcs.

VVZ2000-31A-3.....1 pc.

Sub-plate Assembly Part No.: VZA2000-S-01

* Mounting bolt and gasket are not included.

Thread type

NH	Rc
N	NPT
T	NPTF
F	G

⚠ Caution

**Be sure to read this before handling the products.
Refer to back page 50 for Safety Instructions and pages 3 to 9 for 3/4/5 Port Solenoid Valve Precautions.**