

3 Port Solenoid Valve Direct Operated Poppet Type VT317 Series Rubber Seal



Note) CE-compliant: Electrical entry is applicable only for the DIN terminal.

Compact yet provides a large flow capacity

Dimensions (W x H x D).....45 x 89.5 x 45
(Grommet)

C: 2.6 dm³/(s·bar)
(Passage 2 → 3)

Suitable for use in vacuum applications

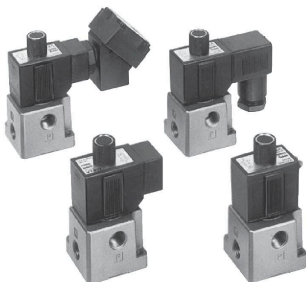
-101.2 kPa

(For vacuum specifications: VT/VO317V)

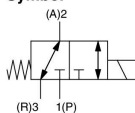
A single valve with 6 valve functions

(Universal porting type)

Selective porting can provide 6 valve functions, such as N.C. valve, N.O. valve, Divider valve, Selector valve etc.



Symbol



How to Order

V T 317 [] - 1 G [] - 02 [] - []

Body type

T	Body ported
O	Manifold

Valve option

Nil	Standard type
E	Continuous duty type
V	For vacuum

Rated voltage

1	100 VAC, 50/60 Hz
2	200 VAC, 50/60 Hz
3	110 VAC, 50/60 Hz
4	220 VAC, 50/60 Hz
5	24 VDC
6	12 VDC
7	240 VAC, 50/60 Hz

Note 1) CE-compliant: Electrical entry is applicable only for the DIN terminal.

Note 2) For other rated voltages, please consult with SMC.

Thread type

Nil	Rc
F	G
N	NPT
T	NPTF

CE-compliant

Nil	—
Q	CE-compliant *

* CE-compliant: Electrical entry is applicable only for the DIN terminal.

Port size

Nil	Without port (For manifold)
02	1/4 (BA)

Electrical entry

		CE-compliant
G	Grommet, 300 mm lead wire	—
H	Grommet, 600 mm lead wire	—
C	Conduit	—
T	Conduit terminal	—
D	DIN terminal	●

Light/Surge voltage suppressor

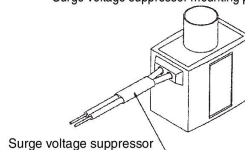
Electrical entry Symbol	G	H	C	T	D	Only "D"
Nil	—	—	—	—	—	●
S	● (Note)	● (Note)	● (Note)	●	●	●
Z	—	—	—	—	—	●

S: With surge voltage suppressor

Note) Refer to the figure below.

Z: With light/surge voltage suppressor

Surge voltage suppressor mounting part (For "G")



Surge voltage suppressor

Manifold

Model	Applicable manifold type	Accessory
VO317-(Q)	Common or individual exhaust	O-ring (KA00066, 4 pcs.) (Note) Hexagon socket head screw (XT012-25C#1, 2 pcs.)

Note) It is not applied to "Continuous duty type". Refer to the accessories on page 1444.

VV061

VV100

V100

S070

VQD

VQD-V

VK

VT