

3 Port Solenoid Valve Direct Operated Poppet Type VT307 Series



Rubber Seal

[Option]
Note) CE compliant: Electrical entry is applicable only for the DIN terminal.



How to Order

V T 307 [] [] - 5 G [] 1 - 01 [] - F - []

Body type

T	Body ported
O	For manifold

Valve option

Nil	Standard type
E*	Continuous duty type
Y*	Energy-saving type
V*	Vacuum specification type
W*	Energy-saving type, Vacuum specification type

* Semi-standard

Pressure specifications

Nil	Standard type (0.7 MPa)
K*	High-pressure type (1 MPa)

* Semi-standard

Rated voltage

1	100 VAC, 50/60 Hz
2	200 VAC, 50/60 Hz
3 [‡]	110 VAC, 50/60 Hz
4 [‡]	220 VAC, 50/60 Hz
5	24 VDC
6 [‡]	12 VDC
7 [‡]	240 VAC, 50/60 Hz

* Semi-standard

Electrical entry

Grommet	DIN terminal
G: 300 mm lead wire H: 600 mm lead wire	D: With connector
	DO: Without connector

CE-compliant

Nil	None
Q	CE-compliant*

* Electrical entry and light/surge voltage suppressor: D/DO/DZ/DOZ only

Bracket

Nil	None
F	With bracket

Thread type

Nil	Rc
F	G
N	NPT
T	NPTF

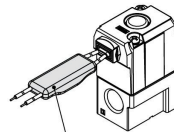
Port size

Nil	Without port (For manifold)
01	1/8 (6A)
02	1/4 (8A)

Light/Surge voltage suppressor

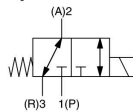
Nil	None
S	With surge voltage suppressor (Grommet type only)
Z	With light/surge voltage suppressor (DIN terminal type only)

With surge voltage suppressor



Surge voltage suppressor

Symbol



Manifold

Model	Applicable manifold type	Accessories
VO307□(-Q)	Common or individual exhaust	Function plate (DXT152-14-1A) ^{Note)} Mounting screw (NXT013-3)

Note) It is not applicable to the continuous duty type. Refer to the accessories on page 1437.

Option

Description	Part no.
Bracket	DXT152-25-1A (With screw)

VV061

VV100

V100

S070

VQD

VQD-V

VK

VT