

How to Order

Note) AC-type models that are CE-compliant have DIN terminals only.

[Option]

Rated voltage

Rated voltage	Valve option	
	Nil	Y
1 100 VAC, 50/60 Hz	●	—
2 200 VAC, 50/60 Hz	●	—
3 110 VAC, 50/60 Hz	●	—
4 220 VAC, 50/60 Hz	●	—
5 24 VDC	●	●
6 12 VDC	●	●
7 240 VAC, 50/60 Hz	●	—

Note 1) AC-type models that are CE-compliant have DIN terminals only.
 Note 2) For other rated voltages, please consult with SMC.



Body ported **VK3120** [] - **1** **G** [] - **M5** [] - [] - []

Base mounted **VK3140** [] - **1** **G** [] - **01** [] - [] - []



Valve option

Nil	Standard
Y*	For low wattage (2 W DC)

* Applicable voltage: 12 and 24 VDC

Light/Surge voltage suppressor

Nil	None	CE-compliant
S	With surge voltage suppressor	●
Z	With light/surge voltage suppressor (Type D only)	●

Note) AC-type models that are CE-compliant have DIN terminals only.
 * Since the indicator light is built in the connector, thus, "DOZ" is not available.

Electrical entry

CE-compliant	G: Grommet (Lead wire length: 300 mm)	H: Grommet (Lead wire length: 600 mm)	D: DIN terminal	DO*: DIN terminal (Without connector)
	DC	●	●	●
AC	—	—	●	●

* For connector part number, refer to page 1429.

Port size (P, A and B port)

M5	M5 x 0.8
01	1/8

* R1, R2: M5

Option

Nil	None
F	With bracket (Not assembled)

Option Part No.

Description	Part no.	Note
Bracket	VK300-43-2A	With screw

CE-compliant

Nil	—
Q	CE-compliant *

Note) AC-type models that are CE-compliant have DIN terminals only.

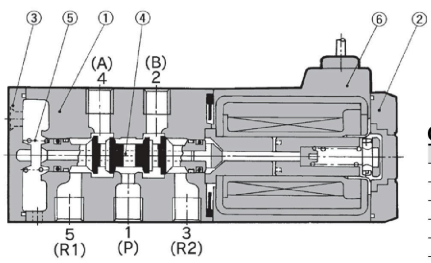
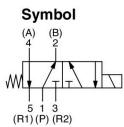
Port size

Nil	Without sub-plate
01	1/8 (With sub-plate)

Thread type

Nil	Rc
F	G
N	NPT
T	NPTF

Construction



Component Parts

No.	Description	Material	Note
1	Body	Aluminum die-casted	Platinum silver
2	Cover	Resin	Black
3	End cover	Resin	Black
4	Spool valve assembly	Aluminum, NBR	
5	Return spring	Stainless steel	
6	Molded coil	Resin	Black