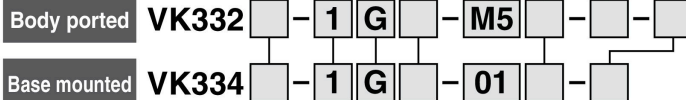


## How to Order

Note) AC-type models that are CE-compliant have DIN terminals only.

Rated voltage	Valve option				
	Nil	V	Y	W	E
1 100 VAC, 50/60 Hz	●	●	—	—	●
2 200 VAC, 50/60 Hz	●	●	—	—	●
3 110 VAC, 50/60 Hz	●	●	—	—	●
4 220 VAC, 50/60 Hz	●	●	—	—	●
5 24 VDC	●	●	●	●	●
6 12 VDC	●	●	●	●	●
7 240 VAC, 50/60 Hz	●	●	—	—	●

Note1) AC-type models that are CE-compliant have DIN terminals only.  
 Note2) For other rated voltages, please consult with SMC.



**Valve option**

Nil	Standard type
V	For vacuum
Y	For low wattage
W	For vacuum/low wattage
E	Continuous duty type

**Electrical entry**

	G: Grommet (Lead wire length: 300 mm)	H: Grommet (Lead wire length: 600 mm)	D: DIN terminal	DO <sup>*</sup> : DIN terminal (Without connector)
CE-compliant	DC <input type="checkbox"/>	<input type="checkbox"/>	<input type="checkbox"/>	<input type="checkbox"/>
	AC <input type="checkbox"/>	<input type="checkbox"/>	<input type="checkbox"/>	<input type="checkbox"/>

\* For the connector part number, refer to page 1418.

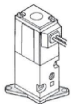
**Port size (A port)**

M5	M5 x 0.8
01	1/8

\* P, R port: M5

**Option**

Nil	None
F	With bracket (Not assembled)



**Option Part No.**

Description	Part no.	Note
Bracket	VK300-43-2A	With screw

**Thread type**

Nil	Rc
F	G
N	NPT
T	NPTF

**CE-compliant**

Nil	—
Q	CE-compliant *

Note) AC-type models that are CE-compliant have DIN terminals only.

**Port size**

Nil*	Without sub-plate
01	1/8 (With sub-plate)

**Light/Surge voltage suppressor**

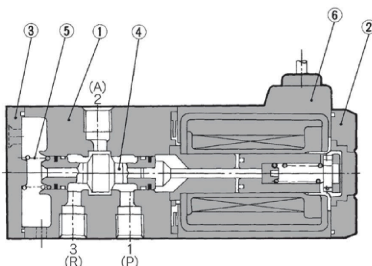
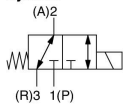
	CE-compliant
Nil*	None
S	With surge voltage suppressor
Z	With light/surge voltage suppressor (Type D only)

Note) Since the indicator light is built in connector, thus, "DOZ" is not available.

\* The continuous duty AC type is equipped with a rectifier, so a diode will be provided.

## Construction

**Symbol**



## Component Parts

No.	Description	Material	Note
1	Body	Aluminum die-casted	Platinum silver
2	Cover	Resin	Black
3	End cover	Resin	Black
4	Spool valve assembly	Aluminum, NBR	
5	Return spring	Stainless steel	
6	Molded coil	Resin	Black