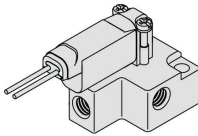


3 Port Solenoid Valve Compact Direct Operated **S070 Series**



How to Order Valve

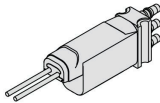


Base mounted

S070 B - 5 B G -

Body ported

S070 C - 5 B G - 32



Body type

Symbol	Body type
B	Base mounted with screws

Port size

Symbol	Sub-plate
Nil	Without sub-plate
M3	With sub-plate
M5	

Body type

Symbol	Body type
C	Body ported

Port size

Symbol	Connection	Applicable tubing
32	Barb fitting	ø3.18/ø2

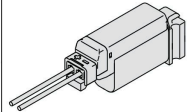
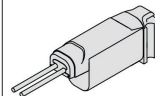
Coil voltage

5	24 VDC
6	12 VDC
V	6 VDC
S	5 VDC
R	3 VDC

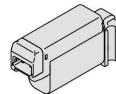
Electrical entry

G - Grommet

C - Plug lead with light/
surge voltage
suppressor



CO - Plug lead without connector
and with light/surge voltage
suppressor



Power consumption - Pressure specification - Flow rate

Symbol	Power consumption (W)	Maximum operating pressure (MPa)	Cv factor
A	0.35	0.1	0.016
B		0.3	0.011
C	0.5	0.3	0.016
D		0.5	0.011
E (Note)		0.1	0.011
F (Note)	0.1 (With power saving circuit)	0.3	0.006

Note) An option only applicable to 24 VDC plug lead type.



Made to Order

(Refer to page 1382 for details.)

Symbol	Specifications
X26	Grommet type, Special lead wire length
X50	Universal type
X62	Normally open type