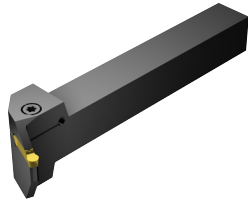
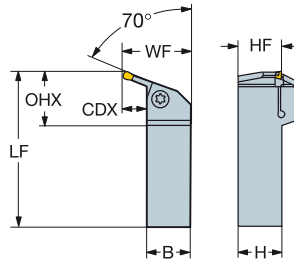


# CoroCut® 1-2 shank tool for profiling

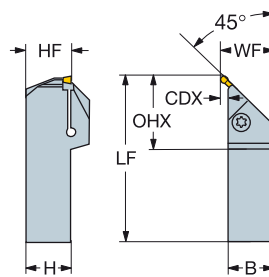
Screw clamp design



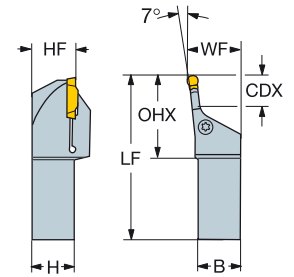
R/LX123..B-070



R/LX123..B-045



R/LX123..B-007

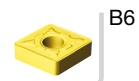


## Metric version

SSC	CZC <sub>MS</sub>	CDX	OHX	Ordering code	Dimensions								LPR	Nm	Kg	MIID
					B	H	LF	WF	HF							
J	25 x 25	16	40	R/LX123J16-2525B-070	25	25	190	41	25	190	5.0	1.80	N123J2-0500-0004-TF			
	32 x 32	16	40	R/LX123J16-3232B-070	32	32	190	48	32	190	5.0	1.42				
G	20 x 20	4	41	R/LX123G04-2020B-045	20	20	150	24	20	150	4.5	0.55	N123G2-0400- RM			
	25 x 25	4	41	R/LX123G04-2525B-045	25	25	150	29	25	150	4.5	0.78	N123G2-0400- RM			
	20 x 20	5	44	R/LX123J05-2020B-045	20	20	150	25	20	150	5.0	0.54	N123J2-0500-0004-TF			
	25 x 25	5	44	R/LX123J05-2525B-045	25	25	150	30	25	150	5.0	0.78	N123J2-0500-0004-TF			
L	25 x 25	25	63	R/LX123L25-2525B-007	25	25	190	32	25	190	6.5	0.90	N123L2-0800- RM			
	32 x 32	25	63	R/LX123L25-3232B-007	32	32	190	40	32	190	6.5	1.00	N123L2-0800- RM			

SSC = To correspond with SSC on insert.

R = Right hand, L = Left hand



B6



I5



I1



F16



I38



I31