

Connection: Thread ↔ Tube

JSC Elbow

RoHS compliant

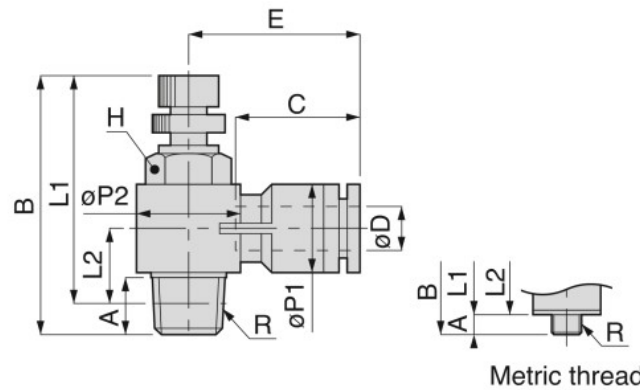
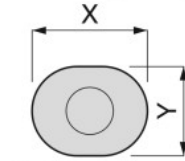


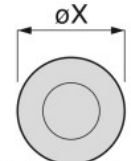
Chart P.415

OP. P.868

CAD 2D & 3D



Release ring Mini  
ø D: 3~6 (Except R3/6)  
1/8



Release ring Standard

Metric thread

Unit : mm

Model code	Tube O.D øD	R	A	B		L1		L2	øP1	øP2	Tube end C	E	Hex.	X (øX)	Y	Weight (g)	CAD file name			
				max.	min.	max.	min.													
JSC3-M3	3	M3×0.5	2.5 [2.2]	29.2	26.5	26.7 [27]	24 [24.3]	6.6 [6.9]	8	9.8	11	15.4	8	9.8	7.8	6.6	JSC3-M3_(C)			
JSC3-M5		M5×0.8	2.9 [3.2]	29.7	27	26.8 [26.5]	24.1 [23.8]	6.7 [6.4]								7.3	JSC3-M5_(C)			
JSC4-M3	4	M3×0.5	2.5 [2.2]	29.2	26.5	26.7 [27]	24 [24.3]	6.6 [6.9]	8	9.8	11	15.4	8	9.8	7.8	6.6	JSC4-M3_(C)			
JSC4-M5		M5×0.8	2.9 [3.2]	29.7	27	26.8 [26.5]	24.1 [23.8]	6.7 [6.4]								7.2	JSC4-M5_(C)			
JSC4-01	4	R1/8	8	41.5	34.9	37.5	30.9	10.7		14.4		17.7	10			17	JSC4-01_			
JSC6-M5	6	M5×0.8	2.9 [3.2]	29.7	27	26.8 [26.5]	24.1 [23.8]	7.5 [7.2]	10.5	9.8	11.6	17.5	8	11.8	9.8	7.9	JSC6-M5_(C)			
JSC6-01		R1/8	8	41.5	34.9	37.5	30.9	10.7								18.3	10	18	JSC6-01_	
JSC6-02		R1/4	11.1	48.9	42.2	42.8	36.1	11.9								18.4	20.2	14	35	JSC6-02_
JSC6-03		R3/8	13.2	54.4	46.9	48	40.5	15.4								14.4	22	17	29	19
JSC8-01	8	R1/8	8	41.5	34.9	37.5	30.9	11.9	14.4	14.4	18.1	26.9	10	13.8	—	21	JSC8-01_			
JSC8-02		R1/4	11.1	48.9	42.2	42.8	36.1	13.2								18.4	28.4	14	38	JSC8-02_
JSC8-03		R3/8	13.2	54.4	46.9	48	40.5	15.4								22	28.9	19	65	JSC8-03_
JSC8-04		R1/2	16	59.7	52.4	51.5	44.2	18								28	31	24	101	JSC8-04_
JSC10-02	10	R1/4	11.1	48.9	42.2	42.8	36.1	14.8	17.6	18.4	20.2	30.9	14	16.8	—	41	JSC10-02_			
JSC10-03		R3/8	13.2	54.4	46.9	48	40.5	16.7								22	31.2	19	69	JSC10-03_
JSC10-04		R1/2	16	59.7	52.4	51.5	44.2	18								28	33.6	24	104	JSC10-04_
JSC12-03	12	R3/8	13.2	54.4	46.9	48	40.5	18.4	21	22	23.4	36.9	19	19.8	—	72	JSC12-03_			
JSC12-04		R1/2	16	59.7	52.4	51.5	44.2	19.7								28	36.4	24	107	JSC12-04_
JSC1/8-M3	1/8	M3×0.5	2.5 [2.2]	29.2	26.5	26.7 [27]	24 [24.3]	6.6 [6.9]	8	9.8	11	15.4	8	9.8	7.8	6.6	JSC1_8-M3_(C)			
JSC1/8-M5		M5×0.8	2.9 [3.2]	29.7	27	26.8 [26.5]	24.1 [23.8]	6.7 [6.4]								7.3	JSC1_8-M5_(C)			
JSC1/4-M5	1/4	M5×0.8	2.9 [3.2]	29.7	27	26.8 [26.5]	24.1 [23.8]	8.4 [8.1]	12.4	9.8	17	24	8	11.8	—	9.5	JSC1_4-M5_(C)			
JSC1/4-01		R1/8	8	41.5	34.9	37.5	30.9	10.9								14.4	23.5	10	19	JSC1_4-01_
JSC1/4-02		R1/4	11.1	48.9	42.2	42.8	36.1	12.2								18.4	25.5	14	36	JSC1_4-02_
JSC5/16-01	5/16	R1/8	8	41.5	34.9	37.5	30.9	11.9	14.4	14.4	18.1	26.9	10	13.8	—	21	JSC5_16-01_			
JSC5/16-02		R1/4	11.1	48.9	42.2	42.8	36.1	13.2								18.4	28.4	14	38	JSC5_16-02_
JSC5/16-03		R3/8	13.2	54.4	46.9	48	40.5	15.4								22	28.9	19	65	JSC5_16-03_
JSC3/8-02	3/8	R1/4	11.1	48.9	42.2	42.8	36.1	14.8	17.6	18.4	20.2	30.9	14	16.8	—	41	JSC3_8-02_			
JSC3/8-03		R3/8	13.2	54.4	46.9	48	40.5	16.7								22	31.2	19	69	JSC3_8-03_

- ※ 1. ④ in model code : Replaced with "A" for Meter-out, "B" for Meter-in.
- ※ 2. ⑤ in Model code / Replaced with "K" for Low cracking pressure type.  
(No ⑤ in Model code indicates Low cracking pressure type is not available.)
- ※ 3. ⑥ in model code : Replaced with "W" for Light-Gray, "-C" for Cleanroom package, and "W-C" for Cleanroom & Light-Gray.
- ※ 4. "L1" and "L2" are reference values for height dimensions after tightening a taper thread.
- ※ 5. Value in [ ] is for cleanroom packaging.

CONTROLLER Air preparation VALVE TUBE MAKE-TO-ORDER PRODUCTS Technical Information 412 Small Control Series Stainless Series PP Series Anti-spatter Series Constant Flow Series Turbine Blade Valve Series Stainless Series PP Series Anti-spatter Series Quick Exhaust Valve Series Exhaust Valve Series Fixed orifice Series Pressure Control Series Pressure Gauge Series Check Valve Series Silencer Series