

■ Connection : Thread ⇔ Tube

PJSC Elbow

RoHS Compliant

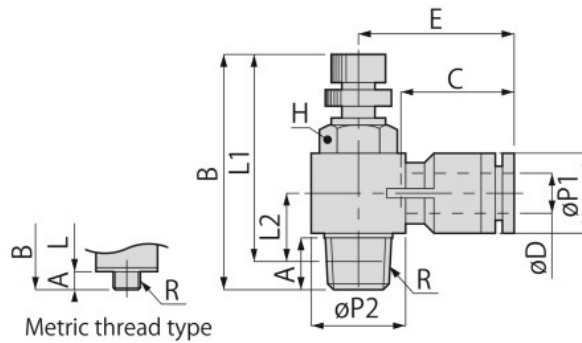


Chart P.460 CAD 2D & 3D

Unit : mm

Model code	Tube O.D. øD	R	A	B		L1		L2	øP1	øP2	Tube end C	E	Hex. H	Weight (g)	CAD File name						
				max.	min.	max.	min.														
PJSC4-M3 □(K)⑥⑧	4	M3×0.5	2.5	29.2	26.5	26.7	24	7.1	9.9	9.8	15	20	8	7.8	PJSC4-M3_						
PJSC4-M5 □(K)⑥⑧		M5×0.8	3	29.7	27											7	7	PJSC4-M5_			
PJSC4-01 □(K)⑥⑦⑧		R1/8	8	40.5	34.4											36.5	30.4	10.7	10	14.4	21.5
PJSC6-M5 □(K)⑥⑧	6	M5×0.8	3	29.7	27	26.7	24	8.3	12.4	14.4	17.1	24.1	8	8	PJSC6-M5_						
PJSC6-01 □(K)⑥⑦⑧		R1/8	8	40.5	34.4	36.5	30.4	10.9								18.4	23.6	12	19	PJSC6-01_	
PJSC6-02 □(K)⑥⑦⑧		R1/4	11.1	47.6	41.4	41.6	35.4	12.2								18.4	25.6	16	38	PJSC6-02_	
PJSC6-03 □⑥⑦⑧		R3/8	13.2	53.5	46.5	47.1	40.1	15.4	14.5	22	29.1	21	67	PJSC6-03_							
PJSC8-01 □(K)⑥⑦⑧	8	R1/8	8	40.5	34.4	36.5	30.4	11.9	14.4	14.4	18.1	26.9	12	22	PJSC8-01_						
PJSC8-02 □(K)⑥⑦⑧		R1/4	11.1	47.6	41.4	41.6	35.4	13.2								18.4	28.4	16	41	PJSC8-02_	
PJSC8-03 □⑥⑦⑧		R3/8	13.2	53.5	46.5	47.1	40.1	15.4								14.5	22	28.9	21	69	PJSC8-03_
PJSC8-04 □⑥⑦⑧		R1/2	16	59.1	52.3	50.9	44.1	18								14.4	28	31	27	103	PJSC8-04_
PJSC10-02 □(K)⑥⑦⑧	10	R1/4	11.1	47.6	41.4	41.6	35.4	14.8	17.6	18.4	20.4	31.1	16	44	PJSC10-02_						
PJSC10-03 □⑥⑦⑧		R3/8	13.2	53.5	46.5	47.1	40.1	16.7								22	31.4	21	71	PJSC10-03_	
PJSC10-04 □⑥⑦⑧		R1/2	16	59.1	52.3	50.9	44.1	18								28	33.8	27	106	PJSC10-04_	
PJSC12-03 □⑥⑦⑧	12	R3/8	13.2	53.5	46.5	47.1	40.4	18.4	21	22	23.6	37.1	21	74	PJSC12-03_						
PJSC12-04 □⑥⑦⑧		R1/2	16	59.1	52.3	50.9	44.1	19.7								28	36.6	27	109	PJSC12-04_	

- ※1. "L1" and "L2" are reference values for height dimensions after tightening taper thread.
- ※2. □ in Model code / Replaced with "A" for Meter-out, "B" for Meter-in.
- ※3. ⑥ in Model code / Replaced with "-F" (FKM), or "-HN" (HNBR) for Seal rubber material change.
(FKM and HNBR are not available for low cracking pressure type.)
- ※4. ⑦ in Model code / Replaced with "-S" for Sealock or "-TP" for Seal tape on thread
- ※5. ⑧ in Model code / Replaced with "-C" for Clean-room package