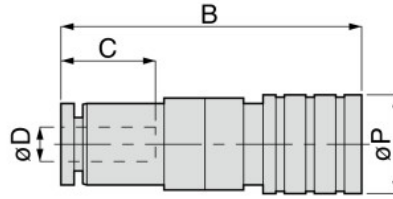


E3 / E7 series Socket

CPSE Straight Tube Socket

CAD

RoHS compliant



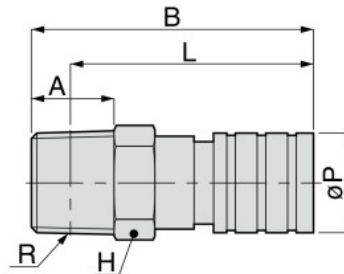
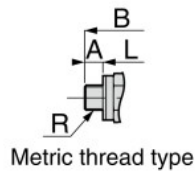
Unit : mm

Model code	Tube O.D. øD	B	øP	Tube end C	Weight (g)	Effective area (mm ²)	CAD file name
CPSE3-4	4	29.7	9.5	10.9	9	3.3	TFLC-001
CPSE7-6	6	32.2	11.5	11.7	13	7.7	

CPSE Straight Screw Socket

CAD

RoHS compliant



Unit : mm

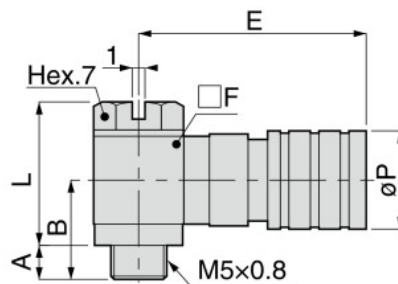
Model code	R	A	B	L	øP	Hex. H	Weight (g)	Effective area (mm ²)	CAD file name
CPSE3-M5	M5 × 0.8	2.9	22.3	19.4	9.5	9	7	3.2	TFLC-001
CPSE3-01	R1/8	8	27.8	23.8		10	11	3.8	
CPSE7-M5	M5 × 0.8	2.9	25	22.1	11.5	10	10	4	
CPSE7-01	R1/8	8	29.8	25.8			13	8.3	

※ . "L" is a reference value for height dimension after tightening taper thread.

CPSE Banjo Socket

CAD

RoHS compliant



Unit : mm

Model code	A	B	L	øP	E	□F	Weight (g)	Effective area (mm ²)	CAD file name
CPSE3H-M5	3.2	9.2	12.8	9.5	21.8	8	11	2	TFLC-001
CPSE7H-M5	3.2	10.8	14.8	11.5	23.5	10	17	2.6	