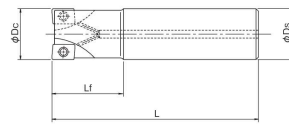


**肩削りカッタ
ストレートシャンクタイプ**
Shoulder Cutter with Straight Shank

PSE SS

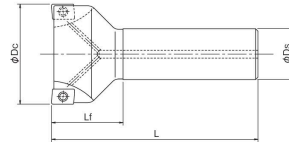


Type1



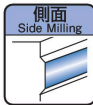
油穴付き
With coolant hole

Type2



油穴付き
With coolant hole

●マークの説明はP1をご覧ください。
See page 1 for explanation of icons.



P.659

■形状寸法表 Specification Chart

(単位:mm) (Unit:mm)

| タイプ Type | ツール No. EDP No. | 呼び Designation | 外径 Dc | 刃数 z | シャン径 Ds | 全長 L | 首下長 Lf | 適用インサート Applicable Inserts | 形状 タイプ Type | 在庫 Stock | 標準価格 (Yen) |
|---|--------------------|-------------------|----------|---------|------------|---------|-----------|----------------------------------|-------------------|-------------|---------------|
| コースピッチ ショート Coarse Pitch Short | 7801101 | PSE11R020SS20-2S | 20 | 2 | 20 | 100 | 30 | ① | 1 | C | 37,900 |
| | 7801102 | PSE11R025SS25-3S | 25 | 3 | 25 | 120 | 35 | | 1 | C | 38,800 |
| | 7801103 | PSE11R032SS32-3S | 32 | 3 | 32 | 130 | 45 | | 1 | C | 45,000 |
| クロスピッチ ショート Close Pitch Short | 7801100 | PSE11R016SS16-2S | 16 | 2 | 16 | 90 | 25 | | 1 | C | 31,800 |
| | 7801116 | PSE11R018SS16-2S | 18 | 2 | 16 | 90 | 25 | | 2 | C | 36,900 |
| | 7801115 | PSE11R020SS20-3S | 20 | 3 | 20 | 100 | 30 | | 1 | C | 37,900 |
| | 7801117 | PSE11R022SS20-3S | 22 | 3 | 20 | 110 | 30 | | 2 | C | 43,900 |
| | 7801104 | PSE11R025SS25-4S | 25 | 4 | 25 | 120 | 35 | | 1 | C | 44,500 |
| | 7801118 | PSE11R028SS25-4S | 28 | 4 | 25 | 120 | 35 | | 2 | C | 51,100 |
| | 7801119 | PSE11R030SS32-4S | 30 | 4 | 32 | 130 | 45 | | 1 | C | 51,400 |
| | 7801105 | PSE11R032SS32-5S | 32 | 5 | 32 | 125 | 40 | | 1 | C | 49,800 |
| 7801120 | PSE11R035SS32-5S | 35 | 5 | 32 | 130 | 35 | 2 | | C | 58,000 | |
| ロング Long | 7801121 | PSE11R016SS16-2L | 16 | 2 | 16 | 150 | 50 | | 1 | C | 38,500 |
| | 7801122 | PSE11R018SS16-2L | 18 | 2 | 16 | 150 | 25 | | 2 | C | 37,500 |
| | 7801123 | PSE11R020SS20-3L | 20 | 3 | 20 | 160 | 60 | | 1 | C | 43,300 |
| | 7801124 | PSE11R022SS20-3L | 22 | 3 | 20 | 160 | 30 | | 2 | C | 43,300 |
| | 7801125 | PSE11R025SS25-3L | 25 | 3 | 25 | 170 | 70 | | 1 | C | 46,500 |
| | 7801126 | PSE11R028SS25-3L | 28 | 3 | 25 | 170 | 35 | | 2 | C | 46,500 |
| | 7801127 | PSE11R030SS32-3L | 30 | 3 | 32 | 190 | 90 | 1 | C | 49,300 | |
| | 7801128 | PSE11R032SS32-3L | 32 | 3 | 32 | 190 | 90 | 1 | C | 49,300 | |
| | 7801129 | PSE11R035SS32-3L | 35 | 3 | 32 | 190 | 35 | 2 | C | 52,200 | |
| コースピッチ ショート Coarse Pitch Short | 7801107 | PSE15R032SS32-2S | 32 | 2 | 32 | 130 | 45 | ② | 1 | C | 36,900 |
| | 7801108 | PSE15R040SS32-3S | 40 | 3 | 32 | 140 | 50 | | 2 | C | 43,100 |
| | 7801109 | PSE15R050SS32-3S | 50 | 3 | 32 | 130 | 45 | | 2 | C | 51,100 |
| | 7801110 | PSE15R063SS32-4S | 63 | 4 | 32 | 130 | 45 | | 2 | C | 66,600 |
| クロスピッチ ショート Close Pitch Short | 7801106 | PSE15R025SS25-2S | 25 | 2 | 25 | 120 | 35 | | 1 | C | 33,100 |
| | 7801130 | PSE15R028SS25-2S | 28 | 2 | 25 | 120 | 35 | | 2 | C | 38,200 |
| | 7801131 | PSE15R030SS32-3S | 30 | 3 | 32 | 130 | 45 | | 1 | C | 47,300 |
| | 7801111 | PSE15R032SS32-3S | 32 | 3 | 32 | 130 | 45 | | 1 | C | 41,100 |
| | 7801132 | PSE15R035SS32-3S | 35 | 3 | 32 | 130 | 35 | | 2 | C | 49,300 |
| | 7801112 | PSE15R040SS32-4S | 40 | 4 | 32 | 140 | 50 | | 2 | C | 51,100 |
| | 7801113 | PSE15R050SS32-5S | 50 | 5 | 32 | 130 | 45 | | 2 | C | 72,300 |
| | 7801114 | PSE15R063SS32-6S | 63 | 6 | 32 | 130 | 45 | | 2 | C | 83,400 |
| ロング Long | 7801133 | PSE15R025SS25-2L | 25 | 2 | 25 | 170 | 70 | | 1 | C | 44,500 |
| | 7801134 | PSE15R028SS25-2L | 28 | 2 | 25 | 170 | 35 | | 2 | C | 44,500 |
| | 7801135 | PSE15R030SS32-3L | 30 | 3 | 32 | 190 | 90 | | 1 | C | 46,500 |
| | 7801136 | PSE15R032SS32-3L | 32 | 3 | 32 | 190 | 90 | | 1 | C | 46,500 |
| | 7801137 | PSE15R035SS32-3L | 35 | 3 | 32 | 190 | 45 | | 2 | C | 49,300 |
| | 7801138 | PSE15R040SS32-3L | 40 | 3 | 32 | 190 | 45 | | 2 | C | 52,900 |

コーナR=R2以上のインサートを使用する場合、カッタボディのコーナ部を修正する必要があります。

ボディ側のコーナR=インサートのR-1 (例: インサートR3の場合ボディにはR2のR)。

When using an insert with a corner radius of R2 or greater, the corner of the cutter body must be adjusted. The body corner radius should be equal to insert radius minus 1 (example: if insert radius is R3, body radius should be R2).