

4. Connection

4.1.4 Reversible motors Single-phase type

● Model

Output power	Model	Motor model	Capacitor model
1 W	0RK1GN-AW2J	0RK1GN-AW2	CH18FAUL
	0RK1A-AW2J	0RK1A-AW2	
	0RK1GN-AW3U	0RK1GN-AW3	CH12FAUL
	0RK1A-AW3U	0RK1A-AW3	
	0RK1GN-CW2J	0RK1GN-CW2	CH045BFAUL
	0RK1A-CW2J	0RK1A-CW2	
6 W	2RK6GN-AW2J	2RK6GN-AW2	CH45FAUL2
	2RK6A-AW2J	2RK6A-AW2	
	2RK6GN-AW2U	2RK6GN-AW2	CH35FAUL2
	2RK6A-AW2U	2RK6A-AW2	
	2RK6GN-CW2J	2RK6GN-CW2	CH10BFAUL
	2RK6A-CW2J	2RK6A-CW2	
	2RK6GN-CW2E	2RK6GN-CW2	CH08BFAUL
	2RK6A-CW2E	2RK6A-CW2	

● Connection diagram

Insulate all the wire connections, such as the connection between the motor and the power supply and that between the motor and the capacitor.

Use the Protective Earth Terminal to ground the motor.

The motor rotates in the clockwise direction if the switch (SW) is connected to the CW side, and it rotates in the counterclockwise direction if connected to the CCW side.

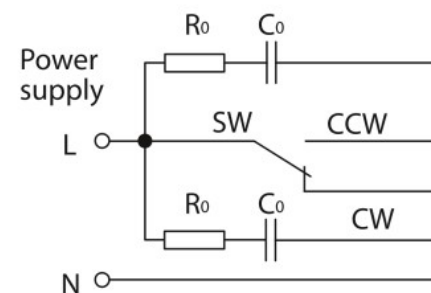
Use lead wires for power supply equal to or thicker than the lead wire size shown below.

Motors of 1 W: AWG 24 (0.2 mm²) or thicker

Motors of 6 W or larger: AWG 20 (0.5 mm²) or thicker

Output power	Model	
15 W	3RK15GN-AW2J	3R
	3RK15A-AW2J	3R
	3RK15GN-AW2U	3R
	3RK15A-AW2U	3R
	3RK15GN-CW2J	3R
	3RK15A-CW2J	3R
25 W	4RK25GN-AW2J	4R
	4RK25A-AW2J	4R
	4RK25GN-AW2U	4R
	4RK25A-AW2U	4R
	4RK25GN-CW2J	4R
	4RK25A-CW2J	4R
	4RK25GN-CW2E	4R
	4RK25A-CW2E	4R
40 W	5RK40GN-AW2J	5R
	5RK40A-AW2J	5R
	5RK40GN-AW2U	5R
	5RK40A-AW2U	5R

Clockwise: CW



● The rotation direction varies de