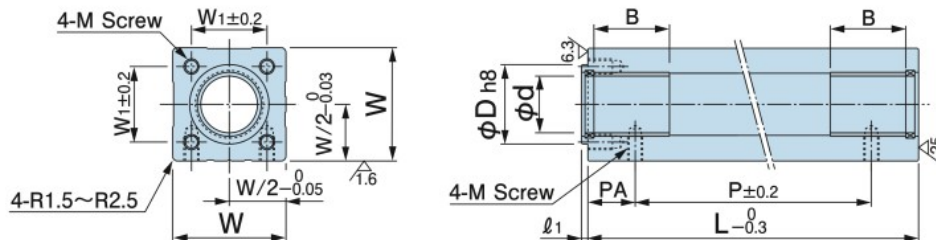


Product Identification for Ordering

Specify by **BTCA I.D. - Length**
Part No.

(e.g.) I.D. is 16mm and length is 75mm. ▶ **BTCA16-75**

Dimension Table



※Exclusive BTCA guide shafts (BGS, BGSP) are available. Refer to page 311 for the detail.

Part No.	φd	L	φD	W	B	ℓ ₁	W ₁	Mounting hole M	P	PA	Weight kg	Tightening torque N·m (kgf·m)	Standard clearance for guide shaft (mm)
BTCA6-50	6	50	12	20	6	2.5	14	M3×5	25	12.5	0.03	0.98 [0.10]	0.035~0.070
BTCA6-75	6	75	12	20	8	2.5	14	M3×5	50	12.5	0.07	0.98 [0.10]	0.035~0.070
BTCA8-50	8	50	14	22	8	2.5	15	M3×5	25	12.5	0.04	0.98 [0.10]	0.018~0.105
BTCA8-75	8	75	14	22	10	2.5	15	M3×5	50	12.5	0.09	0.98 [0.10]	0.018~0.105
BTCA10-50	10	50	16	25	10	2.5	18	M4×6	20	15	0.07	2.4 [0.24]	0.016~0.106
BTCA10-75	10	75	16	25	12	2.5	18	M4×6	45	15	0.11	2.4 [0.24]	0.016~0.106
BTCA10-100	10	100	16	25	12	2.5	18	M4×6	70	15	0.14	2.4 [0.24]	0.016~0.106
BTCA12-50	12	50	20	30	12	3.0	20	M4×6	20	15	0.11	2.4 [0.24]	0.024~0.119
BTCA12-75	12	75	20	30	15	3.0	20	M4×6	45	15	0.16	2.4 [0.24]	0.024~0.119
BTCA12-100	12	100	20	30	15	3.0	20	M4×6	70	15	0.21	2.4 [0.24]	0.024~0.119
BTCA16-50	16	50	25	35	15	3.0	25	M5×8	25	15	0.14	4.9 [0.50]	0.034~0.127
BTCA16-75	16	75	25	35	15	3.0	25	M5×8	40	17.5	0.20	4.9 [0.50]	0.034~0.127
BTCA16-100	16	100	25	35	20	3.0	25	M5×8	65	17.5	0.27	4.9 [0.50]	0.034~0.127
BTCA16-125	16	125	25	35	20	3.0	25	M5×8	90	17.5	0.34	4.9 [0.50]	0.034~0.127
BTCA20-75	20	75	30	45	20	3.0	30	M6×11	40	17.5	0.34	7.8 [0.80]	0.039~0.150
BTCA20-100	20	100	30	45	20	3.0	30	M6×11	60	20	0.45	7.8 [0.80]	0.039~0.150
BTCA20-125	20	125	30	45	20	3.0	30	M6×11	85	20	0.56	7.8 [0.80]	0.039~0.150
BTCA20-150	20	150	30	45	30	3.0	30	M6×11	110	20	0.68	7.8 [0.80]	0.039~0.150
BTCA20-200	20	200	30	45	30	3.0	30	M6×11	160	20	0.91	7.8 [0.80]	0.039~0.150
BTCA20-250	20	250	30	45	30	3.0	30	M6×11	210	20	1.13	7.8 [0.80]	0.039~0.150
BTCA25-75	25	75	35	50	20	3.5	35	M6×11	40	17.5	0.40	7.8 [0.80]	0.042~0.153
BTCA25-100	25	100	35	50	20	3.5	35	M6×11	60	20	0.53	7.8 [0.80]	0.042~0.153
BTCA25-150	25	150	35	50	30	3.5	35	M6×11	110	20	0.80	7.8 [0.80]	0.042~0.153
BTCA25-200	25	200	35	50	35	3.5	35	M6×11	160	20	1.07	7.8 [0.80]	0.042~0.153
BTCA25-250	25	250	35	50	35	3.5	35	M6×11	210	20	1.33	7.8 [0.80]	0.042~0.153
BTCA30-75	30	75	42	60	20	3.5	40	M8×13	35	20	0.58	20 [2.00]	0.045~0.160
BTCA30-100	30	100	42	60	20	3.5	40	M8×13	50	25	0.77	20 [2.00]	0.045~0.160
BTCA30-150	30	150	42	60	30	3.5	40	M8×13	100	25	1.16	20 [2.00]	0.045~0.160
BTCA30-200	30	200	42	60	40	3.5	40	M8×13	150	25	1.55	20 [2.00]	0.045~0.160
BTCA30-250	30	250	42	60	40	3.5	40	M8×13	200	25	1.93	20 [2.00]	0.045~0.160
BTCA30-300	30	300	42	60	40	3.5	40	M8×13	250	25	2.32	20 [2.00]	0.045~0.160
BTCA40-100	40	100	52	70	30	3.5	50	M10×16	40	30	0.97	37 [3.80]	0.050~0.165
BTCA40-150	40	150	52	70	30	3.5	50	M10×16	90	30	1.44	37 [3.80]	0.050~0.165