

## JB-W Female threaded, Free box with 4-way entry

RoHS2



Model designation JB-WG0606□□

Nil . . . Black  
 C1 . . . Light gray  
 BJ . . . Beige  
 Nil . . . Oilproof  
 E . . . Weatherproof



Model			Working temperature	Weight	Q'ty per package
Black	Light gray	Beige			
JB-WG0606/0606E	JB-WG0606C1	JB-WG0606BJ/0606EBJ	-25 to +80°C	90g	1 pc.

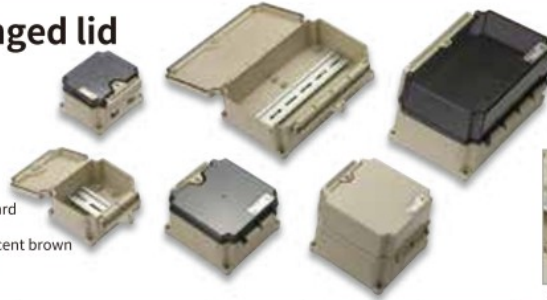
## JB-WLQ Large & multi-purpose with hinged lid

RoHS2

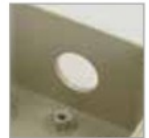


Model designation JB-WLQ 220□ BJ□□

Nil . . . Not perforated  
 -01 . . . Perforated 1  
 -02 . . . Perforated 2  
 Nil . . . Without DIN rail  
 -D . . . With DIN rail  
 -T . . . With terminal board  
 Nil . . . Lid color: Beige  
 -C . . . Lid color: Translucent brown  
 Nil . . . Lid height: LOW  
 H . . . Lid height: HIGH



DIN-rail mounted



Perforated



Pressure adjustment plug equipped

Model	Working temperature	Outline dimensions	Lid color	Height	Weight	Q'ty per package
JB-WLQ100BJ	-40 to +80°C	W120×H74×D116	Beige	LOW	300 g	1 pc.
JB-WLQ100BJ-C	-40 to +65°C		Translucent brown		280 g	
JB-WLQ135BJ	-40 to +80°C	W135×H82×D151	Beige	HIGH	390 g	
JB-WLQ135BJ-C	-40 to +65°C		Translucent brown		370 g	
JB-WLQ135HBJ	-40 to +80°C	W135×H121×D151	Beige	HIGH	510 g	
JB-WLQ135HBJ-C	-40 to +65°C		Translucent brown		460 g	
JB-WLQ220BJ	-40 to +80°C	W220×H82×D151	Beige	LOW	580 g	
JB-WLQ220BJ-C	-40 to +65°C		Translucent brown		540 g	
JB-WLQ220HBJ	-40 to +80°C	W220×H121×D151	Beige	HIGH	750 g	
JB-WLQ220HBJ-C	-40 to +65°C		Translucent brown		680 g	

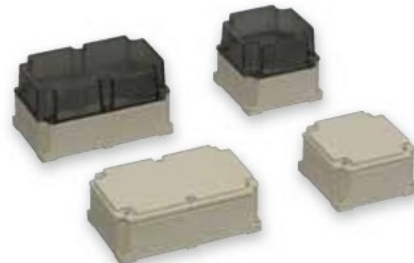
## JB-WL Large & multi-purpose

RoHS2



Model designation JB-WL ※※※□ BJ□

Nil . . . Lid color: Beige  
 -C . . . Lid color: Translucent brown  
 Nil . . . Lid height: LOW  
 H . . . Lid height: HIGH  
 135 . . . Body width: 135mm  
 220 . . . Body width: 220mm



Model	Working temperature	Outline dimensions	Lid color	Height	Weight	Q'ty per package
JB-WL135BJ	-40 to +80°C	W135×H80×D135	Beige	LOW	447 g	1 pc.
JB-WL135BJ-C	-40 to +65°C		Translucent brown		415 g	
JB-WL135HBJ	-40 to +80°C	W135×H120×D135	Beige	HIGH	533 g	
JB-WL135HBJ-C	-40 to +65°C		Translucent brown		478 g	
JB-WL220BJ	-40 to +80°C	W220×H80×D135	Beige	LOW	677 g	
JB-WL220BJ-C	-40 to +65°C		Translucent brown		621 g	
JB-WL220HBJ	-40 to +80°C	W220×H120×D135	Beige	HIGH	800 g	
JB-WL220HBJ-C	-40 to +65°C		Translucent brown		724 g	

**OHM ELECTRIC CO., LTD.**

7000-21, Nakagawa, Hosoe, Kita-ku, Hamamatsu, Shizuoka 431-1304, Japan  
 TEL +81-53-522-5562 FAX +81-53-523-2362 e-mail : info-cs@ohm.co.jp  
 URL : https://www.ohm.jp/

The contents of this catalog are subject to change for product improvement.  
 Colors of products may slightly differ from actual due to printing.