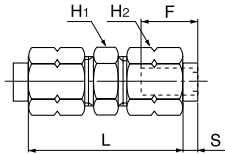


Union connector

●Millimeter size type



Product number	Applicable tube outer diameter (mm)	L (mm)	S (mm)	F Tube insertion length (mm)	H ₁ Width across flat (mm)	H ₂ Width across flat (mm)	Min. inner diameter (mm)	Effective cross-sectional area (mm ²)	Weight (g)
4A07-2400	4	32.8	2.7	14	8.0	10.0	2.0	3.0	15.0
4A07-2600	6	32.8	2.6	14	10.0	12.0	4.0	10.0	20.0
4A07-2800	8	32.7	2.6	15	14.0	14.0	6.0	25.0	27.0
4A07-3000	10	35.9	2.3	18	17.0	17.0	7.5	39.0	42.0
4A07-3200	12	36.9	3.1	19	17.0	19.0	8.0	45.0	48.0

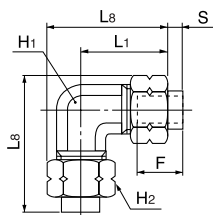


90 degree union elbow

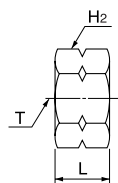
●Millimeter size type



Product number	Applicable tube outer diameter (mm)	L ₁ (mm)	L ₂ (mm)	S (mm)	F Tube insertion length (mm)	H ₁ Width across flat (mm)	H ₂ Width across flat (mm)	Min. inner diameter (mm)	Effective cross-sectional area (mm ²)	Weight (g)
4A08-2400	4	20.4	26.2	2.7	14	10.0	10.0	2.0	2.0	22.0
4A08-2600	6	20.4	27.4	2.6	14	10.0	12.0	4.0	8.0	25.0
4A08-2800	8	22.8	30.9	2.6	15	12.0	14.0	6.0	20.0	33.0
4A08-3000	10	27.0	36.8	2.3	18	14.0	17.0	7.5	31.0	52.0
4A08-3200	12	27.5	38.4	3.1	19	14.0	19.0	8.0	37.0	59.0



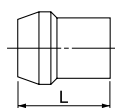
Brass nut



●Millimeter size type

Product number	Applicable tube outer diameter (mm)	T Thread size (M)	L (mm)	H ₂ Width across flat (mm)	Weight (g)
N4	4	M8×0.75	9.0	10.0	4.0
N6	6	M10×1.0	9.0	12.0	5.0
N8	8	M12×1.0	9.0	14.0	6.0
N10	10	M15×1.0	10.0	17.0	9.0
N12	12	M17×1.0	11.0	19.0	11.0

Brass sleeve



●Millimeter size type

Product number	Applicable tube outer diameter (mm)	L (mm)
MSN4	4	9.0
MSN6	6	9.0
MSN8	8	9.0
MSN10	10	10.0
MSN12	12	11.3

Insertless type requires a brass sleeve.