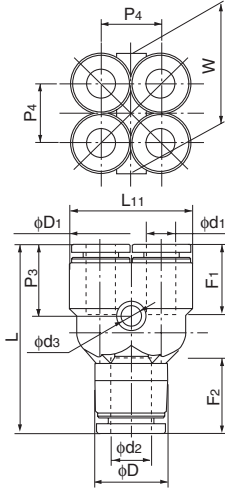


## Double Y union

●Millimeter size type



Product number	d1 Applicable tube outer diameter (mm)	d2 Applicable tube outer diameter (mm)	L (mm)	L11 (mm)	F1 Tube insertion length (mm)	F2 Tube insertion length (mm)	P3 (mm)	P4 (mm)	W (mm)	D1 (mm)	D (mm)	ds (mm)	Min. inner diameter (mm)	Effective cross- sectional area (mm <sup>2</sup> )	Weight (g)
EUWY4-6	4	6	34.2	19.8	13	15	13.4	10.0	19.8	9.8	12.6	3.2	3.5	—	10.0
EUWY6-8	6	8	39.2	24.8	15	16	14.8	12.2	24.8	12.6	14.6	4.2	5.0	—	16.0

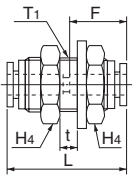


## Panel touch connector

●Millimeter size type



Product number	Applicable tube outer diameter (mm)	L (mm)	F Tube insertion length (mm)	t Max. panel thickness (mm)	H4 (mm)	T1 Recommended panel hole diameter (mm)	Washer outer diameter (mm)	Washer thickness (mm)	Thread length (mm)	Min. inner diameter (mm)	Effective cross- sectional area (mm <sup>2</sup> )	Weight (g)
EPC4	4	31.8	13	8.0	17.0	13	20	2.0	20	3.0	3.5	5.0
EPC6	6	33.6	15	9.5	19.0	15	24	2.5	22	5.0	12.5	7.0
EPC8	8	35.8	16	10.5	22.0	17	28	2.5	23	7.0	28.0	9.0
EPC10	10	41.7	19	14.0	27.0	21	34	3.0	27	9.0	45.0	16.0
EPC12	12	43.6	20	16.0	30.0	23	37	3.0	29	11.0	67.0	67.0

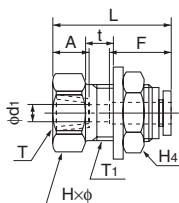


## Internal panel touch connector

●Millimeter size type



Product number	Applicable tube outer diameter (mm)	T Thread size (Rc)	L (mm)	A (mm)	F Tube insertion length (mm)	H×φ Width across flat (mm)	H4 (mm)	t Max. panel thickness (mm)	T1 Recommended panel hole diameter (mm)	d1 (mm)	Washer outer diameter (mm)	Washer thickness (mm)	Min. inner diameter (mm)	Effective cross- sectional area (mm <sup>2</sup> )	Weight (g)
EPFC4-PT1/8	4	Rc1/8	27.9	8.7	13	17.0×18.5	17.0	8.0	13	3.0	20	2.0	3.0	4.0	22.0
EPFC6-PT1/8	6	Rc1/8	29.8	8.7	15	19.0×21.0	19.0	9.0	15	5.0	24	2.5	5.0	10.5	44.0
EPFC6-PT1/4	6	Rc1/4	35.3	13.0	15	19.0×21.0	19.0	9.0	15	5.0	24	2.5	5.0	10.5	50.0
EPFC8-PT1/4	8	Rc1/4	34.4	13.0	16	22.0×24.5	22.0	10.5	17	7.0	28	2.5	7.0	25.0	64.0
EPFC8-PT3/8	8	Rc3/8	38.4	13.5	16	22.0×24.5	22.0	10.5	17	7.0	28	2.5	7.0	26.0	68.0
EPFC10-PT1/4	10	Rc1/4	40.4	13.0	19	27.0×30.0	27.0	14.0	21	9.0	34	3.0	9.0	40.0	117.0
EPFC10-PT3/8	10	Rc3/8	40.4	13.5	19	27.0×30.0	27.0	14.0	21	9.0	34	3.0	9.0	40.0	107.0
EPFC12-PT1/4	12	Rc1/4	42.3	13.0	20	30.0×33.5	30.0	16.0	23	10.5	37	3.0	10.5	45.0	147.0
EPFC12-PT3/8	12	Rc3/8	42.3	13.5	20	30.0×33.5	30.0	16.0	23	11.0	37	3.0	11.0	50.0	138.0



Tube

Clean tube

Processed tube

PushOne fitting

QuickSeal fitting

Clean fitting/ Chemifit

Bamboo-shoot fitting

Control switch/ Detachable series

Jig/Tool/ Accessory

Technical information

Reference