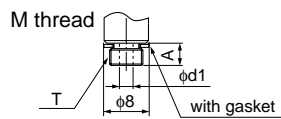
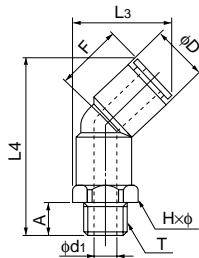


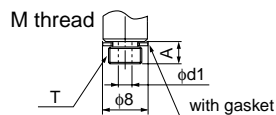
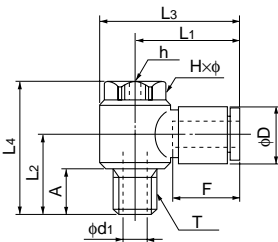
45 degree elbow



●Millimeter size type

| Product number | Applicable tube outer diameter (mm) | T Thread size (M,R) | L3 (mm) | L4 (mm) | A (mm) | F Tube insertion length (mm) | H×φ Width across flat (mm) | D (mm) | d1 (mm) | Min. inner diameter (mm) | Effective cross-sectional area (mm ²) | Weight (g) |
|----------------|-------------------------------------|---------------------|---------|---------|--------|------------------------------|----------------------------|--------|---------|--------------------------|---|------------|
| E45L4-M5 | 4 | M5×0.8 | 19.7 | 34.4 | 4.0 | 13 | 10.0×11.0 | 9.8 | 2.0 | 2.0 | 3.0 | 7.0 |
| E45L4-PT1/8 | 4 | R1/8 | 19.7 | 36.9 | 8.0 | 13 | 10.0×11.0 | 9.8 | 5.0 | 3.0 | 4.0 | 9.0 |
| E45L4-PT1/4 | 4 | R1/4 | 21.9 | 40.9 | 11.0 | 13 | 14.0×15.4 | 9.8 | 7.0 | 3.0 | 4.0 | 16.0 |
| E45L6-M5 | 6 | M5×0.8 | 22.4 | 38.6 | 4.0 | 15 | 12.0×13.0 | 12.6 | 2.0 | 2.0 | 3.5 | 10.0 |
| E45L6-PT1/8 | 6 | R1/8 | 22.4 | 41.1 | 8.0 | 15 | 12.0×13.0 | 12.6 | 5.0 | 5.0 | 12.0 | 12.0 |
| E45L6-PT1/4 | 6 | R1/4 | 23.6 | 45.1 | 11.0 | 15 | 14.0×15.4 | 12.6 | 7.0 | 5.0 | 12.0 | 18.0 |
| E45L6-PT3/8 | 6 | R3/8 | 25.2 | 46.1 | 12.0 | 15 | 17.0×18.5 | 12.6 | 9.0 | 5.0 | 12.0 | 26.0 |
| E45L8-PT1/8 | 8 | R1/8 | 25.5 | 44.0 | 8.0 | 16 | 14.0×15.4 | 14.6 | 5.0 | 5.0 | 18.5 | 15.0 |
| E45L8-PT1/4 | 8 | R1/4 | 25.5 | 48.0 | 11.0 | 16 | 14.0×15.4 | 14.6 | 7.0 | 7.0 | 23.0 | 20.0 |
| E45L8-PT3/8 | 8 | R3/8 | 27.0 | 49.0 | 12.0 | 16 | 17.0×18.5 | 14.6 | 9.0 | 7.0 | 23.0 | 28.0 |
| E45L10-PT1/8 | 10 | R1/8 | 30.0 | 50.0 | 8.0 | 19 | 17.0×18.5 | 17.5 | 5.0 | 5.0 | 22.0 | 22.0 |
| E45L10-PT1/4 | 10 | R1/4 | 30.0 | 54.0 | 11.0 | 19 | 17.0×18.5 | 17.5 | 7.0 | 7.0 | 34.5 | 27.0 |
| E45L10-PT3/8 | 10 | R3/8 | 30.0 | 55.0 | 12.0 | 19 | 17.0×18.5 | 17.5 | 9.0 | 9.0 | 37.0 | 33.0 |
| E45L10-PT1/2 | 10 | R1/2 | 33.0 | 59.0 | 15.0 | 19 | 22.0×24.5 | 17.5 | 12.0 | 9.0 | 38.5 | 52.0 |
| E45L12-PT1/4 | 12 | R1/4 | 33.5 | 58.7 | 11.0 | 20 | 19.0×21.0 | 20.0 | 7.0 | 7.0 | 43.0 | 34.0 |
| E45L12-PT3/8 | 12 | R3/8 | 33.5 | 59.7 | 12.0 | 20 | 19.0×21.0 | 20.0 | 9.0 | 9.0 | 47.0 | 40.0 |
| E45L12-PT1/2 | 12 | R1/2 | 35.3 | 63.7 | 15.0 | 20 | 22.0×24.5 | 20.0 | 12.0 | 10.0 | 47.0 | 57.0 |

Universal elbow



●Millimeter size type

| Product number | Applicable tube outer diameter (mm) | T Thread size (M,R) | L1 (mm) | L2 (mm) | L3 (mm) | L4 (mm) | A (mm) | F Tube insertion length (mm) | H×φ Width across flat (mm) | h (mm) | D (mm) | d1 (mm) | Min. inner diameter (mm) | Effective cross-sectional area (mm ²) | Weight (g) |
|----------------|-------------------------------------|---------------------|---------|---------|---------|---------|--------|------------------------------|----------------------------|--------|--------|---------|--------------------------|---|------------|
| ELB4-M5 | 4 | M5×0.8 | 20.4 | 11.5 | 25.3 | 21.0 | 4.0 | 13 | 8.0×9.0 | 3.0 | 9.8 | 2.0 | 2.0 | 3.0 | 10.0 |
| ELB4-PT1/8 | 4 | R1/8 | 23.4 | 17.5 | 30.4 | 30.0 | 9.5 | 13 | 13.0×14.0 | 5.0 | 9.8 | 5.0 | 3.0 | 4.0 | 20.0 |
| ELB6-M5 | 6 | M5×0.8 | 20.8 | 11.5 | 25.6 | 21.0 | 4.0 | 15 | 8.0×9.0 | 3.0 | 12.6 | 2.0 | 2.0 | 3.5 | 10.0 |
| ELB6-PT1/8 | 6 | R1/8 | 22.8 | 17.5 | 29.8 | 30.0 | 9.5 | 15 | 13.0×14.0 | 5.0 | 12.6 | 5.0 | 3.2 | 8.0 | 21.0 |
| ELB6-PT1/4 | 6 | R1/4 | 24.8 | 22.9 | 34.5 | 37.5 | 13.4 | 15 | 17.0×18.3 | 6.0 | 12.6 | 7.0 | 4.2 | 9.0 | 43.0 |
| ELB8-PT1/8 | 8 | R1/8 | 24.4 | 17.5 | 31.4 | 30.0 | 9.5 | 16 | 13.0×14.0 | 5.0 | 14.6 | 5.0 | 3.2 | 9.0 | 41.0 |
| ELB8-PT1/4 | 8 | R1/4 | 26.4 | 22.9 | 36.1 | 37.5 | 13.4 | 16 | 17.0×18.3 | 6.0 | 14.6 | 7.0 | 4.2 | 14.5 | 44.0 |
| ELB8-PT3/8 | 8 | R3/8 | 28.4 | 24.4 | 40.4 | 40.5 | 13.9 | 16 | 21.0×22.6 | 8.0 | 14.6 | 9.0 | 6.0 | 19.0 | 69.0 |
| ELB10-PT1/4 | 10 | R1/4 | 29.4 | 22.9 | 39.1 | 37.5 | 13.4 | 19 | 17.0×18.3 | 6.0 | 17.5 | 7.0 | 4.2 | 15.5 | 74.0 |
| ELB10-PT3/8 | 10 | R3/8 | 31.4 | 24.4 | 43.4 | 40.5 | 13.9 | 19 | 21.0×22.6 | 8.0 | 17.5 | 9.0 | 6.0 | 23.0 | 74.0 |
| ELB12-PT3/8 | 12 | R3/8 | 34.3 | 24.3 | 48.3 | 40.5 | 13.8 | 20 | 24.0×26.0 | 8.0 | 20.0 | 10.0 | 8.0 | 25.5 | 92.0 |
| ELB12-PT1/2 | 12 | R1/2 | 34.3 | 27.3 | 48.3 | 43.5 | 16.8 | 20 | 24.0×26.0 | 8.0 | 20.0 | 12.0 | 8.0 | 25.5 | 100.0 |

Tube

Clean tube

Processed tube

PushOne fitting

QuickSeal fitting

Clean fitting/ Chemifit

Bamboo-shoot fitting

Control switch/ Detachable series

Jig/Tool/ Accessory

Technical information

Reference