

# special jigs and tools

## Hose assembly jigs and tools

The followings are assembly jigs and tools for Mark 9 and 10.

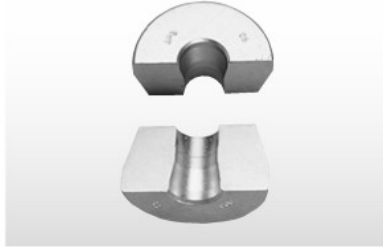
### Pusher



This is a jig to fix the sleeve of the hose coupling when assembling.

List of suitable part numbers  
▶▶▶ p.63

### Die



This is a jig to swage the socket of the hose coupling when assembling.

List of suitable part numbers  
▶▶▶ p.63

### Hand hose cutter



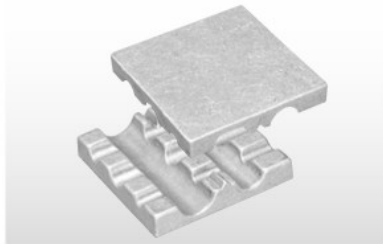
Part number: HC03  
This can cut hoses from sizes O2 to O8.

### Hose cutter



Part number : HC01  
This can cut all hose sizes. There are bolt holes in the base to fix the cutter to a work surface.

### Holding die (vice block)



Part number :  
HD01 (for O3, O4, O5, O6, O8)  
HD02 (for O8, 12, 16)  
This is used to fix hoses in place.  
🔧 Use Size O2 at the position of 3/16 of HD01.

### Assembly lubricant



Part number :  
For assembling steel connectors :  
PG3740 (Nihon Kohsakyu) (lubricant color : green)  
For assembling stainless connectors : CFH68 (Nisseki Mitsubishi) (lubricant color : yellow)  
Content: 500 ml

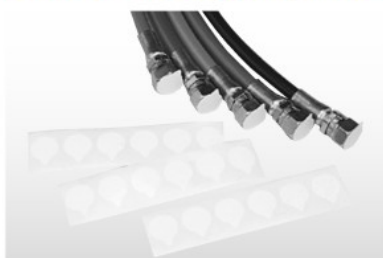
This is used when you insert a hose into a hose connector or swage connectors with assembling tools.

### Campucka coupling detachable jig



Part number : TRL

### Hose coupling cap seal



🔧 Contact us for details.

### CAUTION

If the recommended lubricant is not applied, coating damage and/or socket buckling may occur.

### HC01 Handling Instructions

1. Fix the HC01 to a stable work surface.
2. Remove the blade fixing spring to open the cutter.
3. Set the hose into the U-shaped support.

**CAUTION** Do not use with any resin hoses other than the ones manufactured by Nitta.  
**WARNING** Do not touch the cutting edge of the cutter. Also, do not place your hand near the cutting edge of the cutter. Doing so is dangerous because it may cause injury.

**CAUTION** Cut the hose so that the cut surface is at right angles. If the hose is cut diagonally, there is a risk of causing malfunction due to insufficient hose insertion.  
**CAUTION** Avoid cutting a wire braid hose such as an 1100 series hose. It may cause nicks in the blade.

Use a commercially available wire cutter to cut a wire braid hose.

4. Push down the cutter handle to press-cut the hose.

**CAUTION** Do not use with any resin hoses other than the ones manufactured by Nitta.  
**WARNING** Do not touch the cutting edge of the cutter. Also, do not place your hand near the cutting edge of the cutter. Doing so is dangerous because it may cause injury.

5. When not using the cutter or when temporarily stopping work, fix the blade in closed position with the blade fixing spring so that the blade is not exposed.

**WARNING** Leaving the cutter with the blade exposed or not closed with the fixing spring is very dangerous.