

# DIAL GAUGE SMALL TYPE **NEW!**



Good performance and reasonable price

Reference standard for comparative measurement Block Gauge P42 ~49	Holding measuring instruments Magnetic Base P266 ~274
Precision measuring instrument holder Comparator Stand P282 ~283	Rust prevention Zerust Film for Steel P380

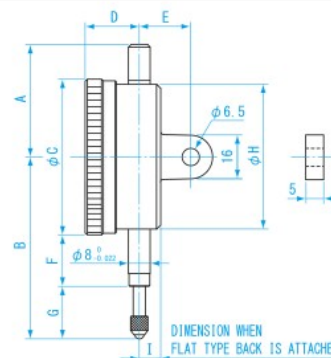


WDI-0342



WDI-0542

### ● DIMENSIONS



Units : mm

Model No.	A	B	C	D	E	F	G	H	I
WDI-0342	31	45	42	14	18	14	10	40	7
WDI-0542	31	47	42	14	18	14	12	40	7

### USE

- For multi-measurement or mounting to fixtures

### MATERIAL

- Body: Aluminum, steel
- Probe: Steel

### FEATURES

- Graduation 0.01mm, small size dial gauge
- Limit indicator clips included
- Jeweled bearings
- Green scale plate
- Flat type back and center-lug back included

Order No.	Model No.	Graduation (mm)	Measuring Range (mm)	Dial Reading (mm)	Backlash Error (μm)	Measuring Force less than (N)	1 Revolution (mm)	Indication Error 1/10 rev (μm)	Error over entire range (μm)	Repeatability (μm)	Weight (including flat type back)
<b>NEW!</b> 151512	WDI-0342	0.01	0~3	±0.50	6	1.5	0.5	8	±14	5	100g
<b>NEW!</b> 151513	WDI-0542	0.01	0~5	±0.50	6	1.5	0.5	9	±16	5	100g

# DIAL GAUGE REPLACEABLE TIP



DI-CP

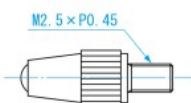


### USE

- Dial gauge probe tip

### MATERIAL

- Measurement tip: Steel ball (DI-CP·DI-CPK)  
Carbide (WDI-W)



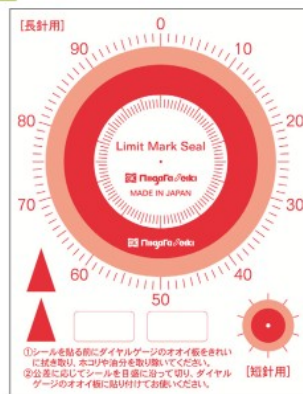
### ● DIMENSIONS Units : mm

### Compatibility Table

Model No.	Applicable Dial Indicator			
DI-CP	WDI-10	DI-1058	WDI-3058SP	
	WDI-5058SP	WDI-8058SP	WDI-10078SP	
	WDI-0342	WDI-0542		
	• Ex-model No.			
DI-CPK	DI-3058	DI-5058	DI-8058	DI-10078
	DI-0342	DI-0542		
	DI-1220A	DI-1220AS	DI-1102A	DI-1810A
	• Ex-model No.			
WDI-W	DI-10KD			
	DI-10 (Rev. since 2007)			
	DI-1060SC	DI-0560SC	DI-0160SC	

Order No.	Model No.
151500	DI-CP
151675	DI-CPK
151914	WDI-W

# DIAL GAUGE LIMIT MARK STICKER



### USE

- GO/NO GO judgment for diameter inspection

### MATERIAL

- Pobick #100Rt-H (high strength, transparent, removable)

### FEATURES

- Acceptable range is clearly visible. Ideal for inspection of mass produced parts.
- Includes arrow pointers for use with notes, indicating alert points, etc.

### SPECIFICATIONS

- Applicable dial gauge: DIAL face more than φ52mm
- Sticker outside diameter: Long indicator ... φ51.5mm  
Short indicator ... φ10mm

- Contains 10 pcs

Order No.	Model No.	Quantity	Weight
151674	DI-LMS	10	20g



DIAL GAUGE

DIAL INDICATOR

THICKNESS GAUGE

BORE GAUGE

CALIPER GAUGE

HARDNESS-TENSION-FILM THICKNESS

MAGNETIC BASE