

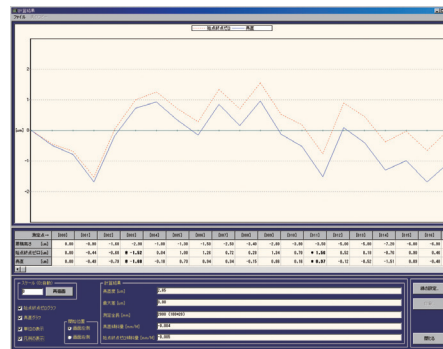
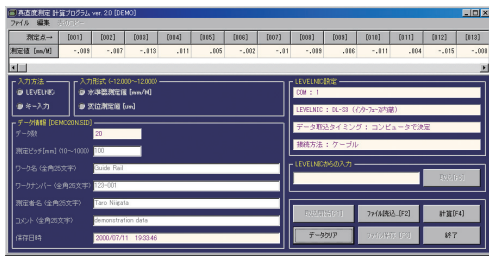


LEVELNIC MEASUREMENT SOFTWARE

Use to easily calculate flatness and straightness when connected to Levelnic with cable or wireless connection Straightness software ver. 2.0

● With straightness software Levelnic can easily perform the straightness measurements that once required an autocollimator, and for a lower cost!

■ Straightness measurement



USE • Software to perform straightness calculations

■ FEATURES

- Both wired and wireless capability
- Model compatibility: DL-S2 + D3 • DL-S3 • DL-S3C • DL-S3L • DL-m3 • DL-m3LS • DL-S2W
- ※ Above compatibility applies for direct connection. Data can be manually typed in from any model, including bubble tube type level.

■ SPECIFICATIONS

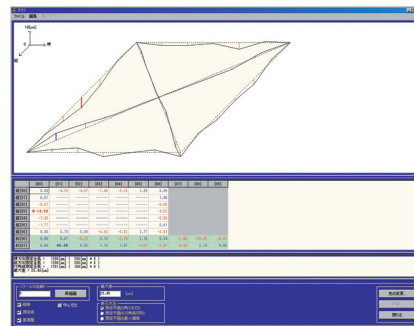
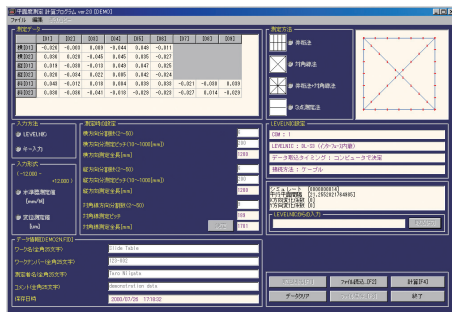
- Supports : Windows 95 • 98 • ME • 2000 • XP • Vista • 7

Order No.	Model No.
010066	ST

Flatness software Ver. 2.0

● With Flatness software Levelnic can easily perform the flatness measurements that once required an autocollimator, and for a lower cost!

■ Flatness measurement



USE • Software to perform flatness calculations

■ FEATURES

- Both wired and wireless capability
- Model compatibility: DL-S2 + D3 • DL-S3 • DL-S3C • DL-S3L • DL-m3 • DL-m3LS • DL-S2W
- ※ Above compatibility applies for direct connection. Data can be manually typed in from any model, including bubble tube type level.

■ SPECIFICATIONS

- Supports : Windows 95 • 98 • ME • 2000 • XP • Vista • 7

Order No.	Model No.
010065	FL

Data Record Software Ver. 2.0

USE • Records output data from Levelnic

■ FEATURES

- Levelnic measurements are recorded to text file
- Model compatibility: DL-S2 + D3 • DL-S3 • DL-S3C • DL-S3L • DL-m3 • DL-m3LS • DL-S2W

■ SPECIFICATIONS

- Supports : Windows 95 • 98 • ME • 2000 • XP • Vista • 7

Order No.	Model No.
010067	LEVELOG