

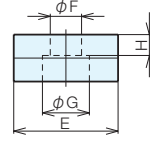
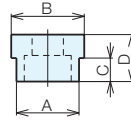
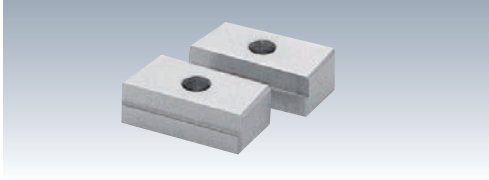
RoHS Compliant

No.E-275B



Machine Vise Series Accessories

Guide Blocks



Specifications

(* 2 pieces per set, with mounting bolts. Material: S45C)

Compatible Groove Width	Compatible Models	Order No.	No.	A	B	C	D	E	F	G	H	Compatible Bolts	
10	LTCV all models, LTFV & LTFH all models, LF-M, LF-MC, LT5AU-100 (M, F, FM), LT150L, LT-JV, LTM-WL/LTAW, LTH3P-150S, LT-HDP150, MSV all models, SV-80, PV-2, PV-3, TP	55958	LTGB10-18	10	18	6.5	11	24	7	11	4.5	M6	
	12	LTCV all models, LTFV & LTFH all models, LF-M, LF-MC, LT150L, LT-JV, LTM-WL/LTAW, LTH3P-150S, LT-HDP150, MSV all models, SV-80, PV-2, PV-3, TP	32122	LTGB12-18	12	18	6.5	11	24	7	11	4.5	M6
		LTH3P125	66311	LTGB12-16	12	16	5.5	10	24	7	11	3.5	M6
ETO-TH type all models, SV-56, LT5AU-75 (F,FM),		66310	LTGB12-14	12	14	5.5	9	20	7	11	2.5	M6	
14	LTCV all models, LTFV & LTFH all models, LF-M, LF-MC, LT5AU-100 (M, F, FM), LT150L, LT-JV, LTM-WL/LTAW, LTH3P-150S, LT-HDP150, MSV all models, SV-80, PV-2, PV-3, TP	32123	LTGB14-18	14	18	6.5	11	24	7	11	4.5	M6	
	LTH3P125	43868	LTGB14-16	14	16	5.5	10	24	7	11	3.5	M6	
	LTFV75, E-173 ETO-TH type all models, SV-56, LT5AU-75 (F,FM)	66312	LTGB14-14	14	14	-	9	20	7	11	2.5	M6	
16	LTCV all models, LTFV<FH all models, LF-M, LF-MC, LT5AU-100 (M, F, FM), LT150L, LT-JV, LTM-WL/LTAW, LTH3P-150S, LT-HDP150, MSV all models, SV-80, PV-2, PV-3, TP	32124	LTGB16-18	16	18	6.5	11	24	7	11	4.5	M6	
	LTH3P125	43869	LTGB16-16	16	16	-	10	24	7	11	3.5	M6	
	LTFV75, E-173 ETO-TH type all models, SV-56, LT5AU-75 (F,FM),	66313	LTGB16-14	16	14	5.5	10	24	7	11	3.5	M6	
18	LTCV all models, LTFV & LTFH all models, LF-M, LF-MC, LT5AU-100 (M, F, FM), LT150L, LT-JV, LTM-WL/LTAW, LTH3P-150S, LT-HDP150, MSV all models, SV-80, PV-2, PV-3, TP	32125	LTGB18-18	18	18	-	11	24	7	11	4.5	M6	
	LTH3P125	43870	LTGB18-16	18	16	5.5	11	24	7	11	4.5	M6	
	LTFV75, E-173 ETO-TH type all models, SV-56, LT5AU-75 (F,FM),	66314	LTGB18-14	18	14	5.5	11	24	7	11	4.5	M6	
20	LTCV all models, LTFV<FH all models, LF-M, LF-MC, LT5AU-100 (M, F, FM), LT150L, LT-JV, LTM-WL/LTAW, LTH3P-150S, LT-HDP150, MSV all models, SV-80, PV-2, PV-3, TP	32133	LTGB20-18	20	18	6.5	12	24	7	11	5.5	M6	
	LTH3P125	43871	LTGB20-16	20	16	6.5	12	24	7	11	5.5	M6	
	LTFV75, E-173 ETO-TH type all models, SV-56, LT5AU-75 (F,FM),	66315	LTGB20-14	20	14	7.5	12	20	7	11	5.5	M6	
22	LTCV all models, LTFV<FH all models, LF-M, LF-MC, LT5AU-100 (M, F, FM), LT150L, LT-JV, LTM-WL/LTAW, LTH3P-150S, LT-HDP150, MSV all models, SV-80, PV-2, PV-3, TP	32134	LTGB22-18	22	18	8.5	14	24	7	11	7.5	M6	
	LTH3P125	43872	LTGB22-16	22	16	6.5	12	34	7	11	5.5	M6	
	LTFV75, E-173 ETO-TH type all models, SV-56, LT5AU-75 (F,FM),	66316	LTGB22-14	22	14	9.5	14	20	7	11	7.5	M6	
24	LTCV all models, LTFV<FH all models, LF-M, LF-MC, LT5AU-100 (M, F, FM), LT150L, LT-JV, LTM-WL/LTAW, LTH3P-150S, LT-HDP150, MSV all models, SV-80, PV-2, PV-3, TP	51959	LTGB24-18	24	18	10.5	16	24	7	11	9.5	M6	
28	LTCV all models, LTFV<FH all models, LF-M, LF-MC, LT150L, LT-JV, LTM-WL/LTAW, LTH3P-150S, LT-HDP150, MSV all models, SV-80, PV-2, PV-3, TP	51960	LTGB28-18	28	18	10.5	16	24	7	11	9.5	M6	