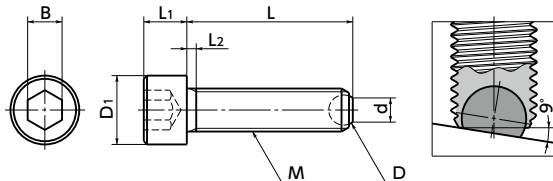


SCB-F / SCBS-F Clamping Bolt - Flat Ball

Recommendation



WEB Selection Tool WEB CAD Download SUS Stainless steel



● Material/Finish

RoHS Compliant

	SCB-F Made of Steel	SCBS-F Made of Stainless Steel
Thread	SCM435	SUSXM7
Part	Ferrosferric Oxide Film (Black)	
Ball	SUJ2 (hardness: 55 - 60 HRC)	SUS440C (hardness: 55 - 60 HRC)

● Part number specification

SCBS-M6-20-F



- Surface is contacted by a flat ball. This does not scratch the work.
- The ball rotates flexibly by up to 9°. It securely clamps even when the mating part is tilted.
- For tool holder set screw and pressure piece stopper.
- We also produce products of special specifications, e.g. nominal diameter of thread, length and surface treatment. Please feel free to contact our customer service.

Unit : mm

Part Number Steel	Allowable load (N)	Part Number Stainless steel	Allowable load (N)	M (coarse)	L	D1	D	d	L1	L2	B	Mass (g)
SCB-M4-10-F	3500	SCBS-M4-10-F	2040	M4	10	7	2.5	2	4	2.1	3	1.5
SCB-M4-12-F	3500	SCBS-M4-12-F	2040	M4	12	7	2.5	2	4	2.1	3	1.7
SCB-M4-16-F	3500	SCBS-M4-16-F	2040	M4	16	7	2.5	2	4	2.1	3	1.9
SCB-M4-20-F	3500	SCBS-M4-20-F	2040	M4	20	7	2.5	2	4	2.1	3	2.2
SCB-M4-25-F	3500	SCBS-M4-25-F	2040	M4	25	7	2.5	2	4	2.1	3	2.5
SCB-M5-12-F	5000	SCBS-M5-12-F	3000	M5	12	8.5	3	2.5	5	2.4	4	2.9
SCB-M5-16-F	5000	SCBS-M5-16-F	3000	M5	16	8.5	3	2.5	5	2.4	4	3.4
SCB-M5-20-F	5000	SCBS-M5-20-F	3000	M5	20	8.5	3	2.5	5	2.4	4	3.9
SCB-M5-25-F	5000	SCBS-M5-25-F	3000	M5	25	8.5	3	2.5	5	2.4	4	4.4
SCB-M5-30-F	5000	SCBS-M5-30-F	3000	M5	30	8.5	3	2.5	5	2.4	4	5
SCB-M6-16-F	9000	SCBS-M6-16-F	4500	M6	16	10	4	3.2	6	3	5	5.6
SCB-M6-20-F	9000	SCBS-M6-20-F	4500	M6	20	10	4	3.2	6	3	5	6.5
SCB-M6-25-F	9000	SCBS-M6-25-F	4500	M6	25	10	4	3.2	6	3	5	7.6
SCB-M6-30-F	9000	SCBS-M6-30-F	4500	M6	30	10	4	3.2	6	3	5	8.7
SCB-M6-40-F	9000	SCBS-M6-40-F	4500	M6	40	10	4	3.2	6	3	5	11
SCB-M8-20-F	15000	SCBS-M8-20-F	9000	M8	20	13	5.5	4.5	8	3.5	6	13.5
SCB-M8-30-F	15000	SCBS-M8-30-F	9000	M8	30	13	5.5	4.5	8	3.5	6	17.5
SCB-M8-35-F	15000	SCBS-M8-35-F	9000	M8	35	13	5.5	4.5	8	3.5	6	19
SCB-M8-40-F	15000	SCBS-M8-40-F	9000	M8	40	13	5.5	4.5	8	3.5	6	21.5
SCB-M8-50-F	15000	SCBS-M8-50-F	9000	M8	50	13	5.5	4.5	8	3.5	6	25
SCB-M10-25-F	24000	SCBS-M10-25-F	14400	M10	25	16	7	6	10	4.5	8	26
SCB-M10-30-F	24000	SCBS-M10-30-F	14400	M10	30	16	7	6	10	4.5	8	29
SCB-M10-40-F	24000	SCBS-M10-40-F	14400	M10	40	16	7	6	10	4.5	8	34
SCB-M10-50-F	24000	SCBS-M10-50-F	14400	M10	50	16	7	6	10	4.5	8	39
SCB-M10-60-F	24000	SCBS-M10-60-F	14400	M10	60	16	7	6	10	4.5	8	47
SCB-M12-30-F	30000	SCBS-M12-30-F	18000	M12	30	18	8.5	7.2	12	5	10	40
SCB-M12-50-F	30000	SCBS-M12-50-F	18000	M12	50	18	8.5	7.2	12	5	10	56
SCB-M12-80-F	30000	SCBS-M12-80-F	18000	M12	80	18	8.5	7.2	12	5	10	83
SCB-M16-40-F	73000	SCBS-M16-40-F	43800	M16	40	24	12	10.7	16	6	14	91
SCB-M16-60-F	73000	SCBS-M16-60-F	43800	M16	60	24	12	10.7	16	6	14	122
SCB-M16-80-F	73000	SCBS-M16-80-F	43800	M16	80	24	12	10.7	16	6	14	154

Cleanroom Wash & Packaging → P.792	Screw Combination → P.798	Screw Length Adjustment → P.796	Vibration Resistant → P.795
Please feel free to contact us	Not Available	Not Available	Available / Add'l charge