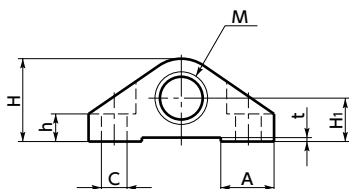
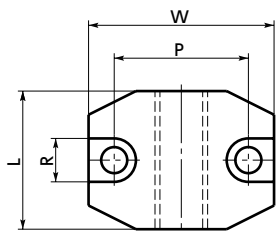


PHL Plunger Holder


[WEB Selection Tool](#)
[WEB CAD Download](#)
SUS Stainless steel


- Holder for mounting plunger.

- Material/Finish

RoHS Compliant

	PHL
Main body	Equivalent to SUS303

Unit : mm

Part Number	M (coarse)	L	H	H ₁	h	W	A	t	P	R	C	Mass (g)
PHL-M5-A	M5	20	10.5	5.5	4.8	23	6.5	0.5	17	6	3.4	21
PHL-M6-A	M6	20	10.5	5.5	4.8	23	6.5	0.5	17	6	3.4	20
PHL-M8-A	M8	26	15.5	8	6	34	11	1	25	8	4.5	54
PHL-M10-A	M10	26	15.5	8	6	34	11	1	25	8	4.5	52
PHL-M12-A	M12	35	21	11	7	47	13.5	1	34	11	6.6	135
PHL-M16-A	M16	35	21	11	7	47	13.5	1	34	11	6.6	130

- Part number specification

PHL - M6 - A

Product Code



Product Code

Cleanroom Wash & Packaging → P.792

Vibration Resistant → P.795

Laser Marking → P.806

Available / Add'l charge

Not Available

Not Available