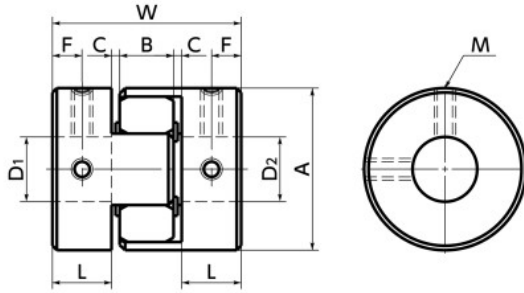


MJT Flexible coupling - Jaw - type - Set screw type **NEW**

Selection Tool
 CAD Download
 High torque
 Vibration absorption
 Electrical Insulation

MJT



Outside Diameter: $\phi 14 - \phi 30$

Dimensions

Unit : mm

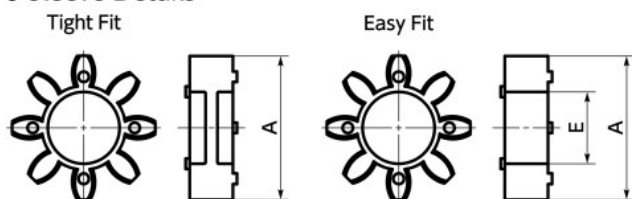
Part Number	A	L	W	B	C*1	Sleeve E	F	M	Screw Tightening Torque (N·m)
MJT-14	14	7	22	6	1	4.5	3.5	M3	0.7
MJT-20	20	10	30	8	1	7	5	M3	0.7
MJT-30	30	11	35	10	1.5	11	5.5	M4	1.7
MJT-40	40	25	66	12	2	18	12.5	M5	4
MJT-55	55	30	78	14	2	27.5	15	M6	7
MJT-65	65	35	90	15	2.5	31	17.5	M8	15
MJT-80	80	45	114	18	3	37	22.5	M8	15
MJT-95	95	50	126	20	3	45.5	25	M8	15

*1 Use with C Dimension

Part Number	Standard Bore Diameter (dimensional allowance H8)																																		
	D1	D2	3	4	4.5	5	6	6.35	7	8	9.525	10	11	12	14	15	16	18	19	20	22	24	25	28	30	32	35	38	40	42	45	48	50	55	
MJT-14	●	●	●	●	●																														
MJT-20				●	●	●	●	●	●	●																									
MJT-30							●	●	●	●	●	●	●	●																					
MJT-40											●	●	●	●	●	●	●																		
MJT-55																●	●	●	●	●				●											
MJT-65																●	●	●	●	●				●											
MJT-80																								●	●	●	●	●							
MJT-95																																●	●	●	

- All products are provided with hex socket set screw.
- In a case where the bore diameter is $\phi 4$ or less, the setscrew is used in only one place.
- Recommended dimensional allowances of applicable shaft diameter are h6 and h7.
- A set of hubs with set screw type for one side and clamping type or other type for the other side is available upon request.

● Sleeve Details



● Part number specification

MJT-95 - RD - 42-45 1 set

1 2 3
MJ - 40 - RD - SLV Single sleeve
 Sleeve Symbol Outside Diameter (A Dimension) 2 Sleeve Symbol

Additional Keyway at Shaft Hole → P.xxxx
 Cleanroom Wash & Packaging → P.xxxx
 Change to Stainless Steel Screw → P.xxxx
 Available / Add'l charge Available / Add'l charge Available / Add'l charge