

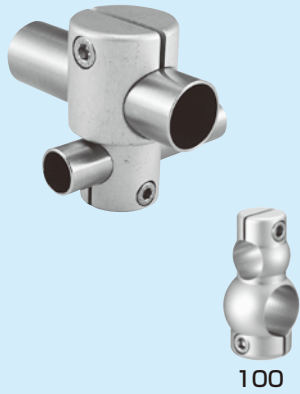
# Different bore type

More compact and lighter with combination of different diameter shaft  
(link from  $\phi 6 \sim \phi 35$ )

Colorization of PIJON 8 colors

When you use the parts for a clockwise and anticlockwise rotation as a pair, it is easy to clamp a screw.

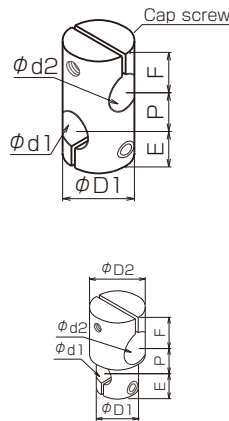
**100, 200**  
for right-angle shaft attachment



The type 100 is different shape.

## Cross 90° hole

\*Please note that the tightening direction of screws is different.

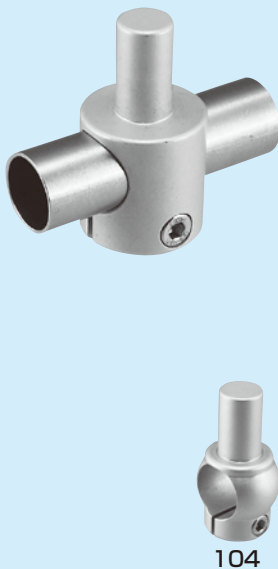


●=Part No.

from left	from right	$\phi d1$	$\phi d2$	$\phi D1$	$\phi D2$	E	P	F	Cap screw
CS200	CS201	$\phi 6$	$\phi 9$	$\phi 13$	$\phi 15$	9	9	12	M3·M4
CE200	-	$\phi 8$	$\phi 9$	$\phi 15$	-	12	10	12	2-M4
GE200	-	$\phi 8$	$\phi 12$	$\phi 15$	$\phi 22$	12	13	14	
FC200	-	$\phi 9$	$\phi 10$	$\phi 15$	-	13	11	13	
JC200	JC201	$\phi 9$	$\phi 13$	$\phi 15$	$\phi 22$	12	13	14	
GF200	-	$\phi 10$	$\phi 12$	$\phi 22$	-	14	14	14	2-M5
JF200	-	$\phi 10$	$\phi 13$	$\phi 16$	$\phi 22$	14	14	14	
KF200	-	$\phi 10$	$\phi 15$	$\phi 20$	$\phi 25$	15	16	18	2-M5
JG200	-	$\phi 12$	$\phi 13$	$\phi 22$	-	14	14	14	2-M4
NG200	-	$\phi 12$	$\phi 16$	$\phi 22$	$\phi 25$	16	17	18	2-M5
LJ200	LJ201	$\phi 13$	$\phi 19.1$	$\phi 22$	$\phi 29$	15	18	19	
NK200	-	$\phi 15$	$\phi 16$	$\phi 25$	-	17.5	18	17.5	
QK200	-	$\phi 15$	$\phi 20$	$\phi 25$	$\phi 29$	18	22	20	2-M6
QL200	-	$\phi 19.1$	$\phi 20$	$\phi 29$	-	20	21	20	
HL100	HL101	$\phi 19.1$	$\phi 25.1$	$\phi 24$	$\phi 30$	21	25	24	
HN100	-	$\phi 16$	$\phi 25.1$	$\phi 22$	$\phi 30$	20	25	24	
RH100	-	$\phi 25.1$	$\phi 30$	$\phi 30$	$\phi 36$	24	30	29	2-M8
TR100	-	$\phi 30$	$\phi 32$	$\phi 36$	$\phi 38$	29	34	31	
UT100	-	$\phi 32$	$\phi 35$	$\phi 38$	$\phi 40$	33	37	36	

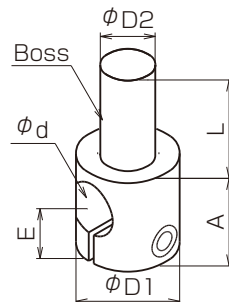
**104, 204**

for free assembly with other parts



The type 104 is different shape.

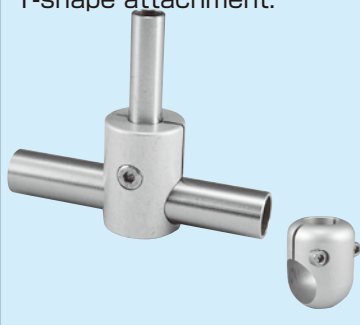
## One-sided boss



	$\phi d$	$\phi D1$	$\phi D2$	E	A	Boss length L	Cap screw
CS204	$\phi 9$	$\phi 15$	$\phi 6$	12	19	14	M4
CS204M						25	
CE204	$\phi 8$	$\phi 15$	$\phi 9$	12	19	16	M4
CE204M						30	
FC204	$\phi 10$	$\phi 15$	$\phi 9$	13	20	17	M4
FC204M						30	
JC204	$\phi 13$	$\phi 22$	$\phi 9$	14	22	16	M4
JC204M						30	
GF204	$\phi 12$	$\phi 22$	$\phi 10$	14	23	23	M4
GF204M						30	
JF204	$\phi 13$	$\phi 22$	$\phi 10$	14	23	23	M4
JF204M						30	
JG204	$\phi 12$	$\phi 22$	$\phi 13$	14	23	23	M4
JG204M						45	
LJ204	$\phi 19.1$	$\phi 29$	$\phi 13$	19	31	23	M5
LJ204M						45	
NK204	$\phi 15$	$\phi 25$	$\phi 16$	18	29	25	M5
NK204M						50	
QL204	$\phi 20$	$\phi 29$	$\phi 19$	20	33	30	M5
QL204M						60	
QL204L						100	
HL104	$\phi 25.1$	$\phi 37$	$\phi 19$	24	39	30	M6
HL104M						70	
HL104L						100	
RH104	$\phi 30$	$\phi 45$	$\phi 25$	29	48	40	M6
TR104	$\phi 32$	$\phi 48$	$\phi 30$	31	51	50	M6
UT104	$\phi 35$	$\phi 52$	$\phi 32$	36	58	50	M8

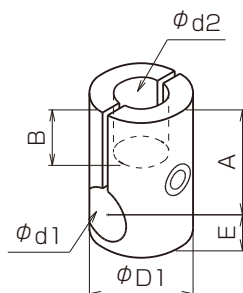
**110, 209**

for frame support or T-shape attachment.



The type 110 is different shape.

## Vertical-horizontal hole



	$\phi d1$	$\phi d2$	$\phi D1$	E	A	B	Cap screw
CS209	$\phi 9$	$\phi 6$	$\phi 15$	7	17	6	M4
JC209	$\phi 13$	$\phi 9$	$\phi 22$	9	22	8	
HL110	$\phi 25.1$	$\phi 19.1$	$\phi 37$	17	31	18	2-M5